

## GPR4 antibody

**Cat. No. GTX70541**

<b>Host</b>	Rabbit
<b>Clonality</b>	Polyclonal
<b>Isotype</b>	IgG
<b>Applications</b>	IHC-P
<b>Reactivity</b>	Human, Mouse, Rat, Rabbit, Bovine, Dog, Pig, Monkey, Bat

**Package**  
25 µg

## Applications

**Application Note**

\*Optimal dilutions/concentrations should be determined by the researcher.

Suggested dilution	Recommended dilution
IHC-P	8 - 16 µg/ml

Not tested in other applications.

## Properties

<b>Form</b>	Liquid
<b>Buffer</b>	PBS
<b>Preservative</b>	0.1% Sodium azide
<b>Storage</b>	Store as concentrated solution. Centrifuge briefly prior to opening vial. For short-term storage (1-2 weeks), store at 4°C. For long-term storage, aliquot and store at -20°C or below. Avoid multiple freeze-thaw cycles.
<b>Concentration</b>	1 mg/ml (Please refer to the vial label for the specific concentration.)
<b>Immunogen</b>	Synthetic 20 amino acid peptide from 2nd extracellular domain of human GPR4.
<b>Purification</b>	Purified by affinity chromatography
<b>Conjugation</b>	Unconjugated

**Note**

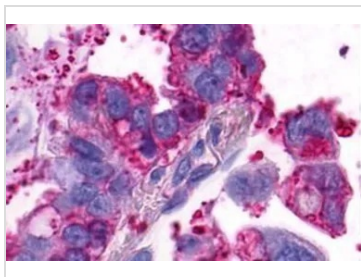
For laboratory research use only. Not for any clinical, therapeutic, or diagnostic use in humans or animals. Not for animal or human consumption.

Purchasers shall not, and agree not to enable third parties to, analyze, copy, reverse engineer or otherwise attempt to determine the structure or sequence of the product.

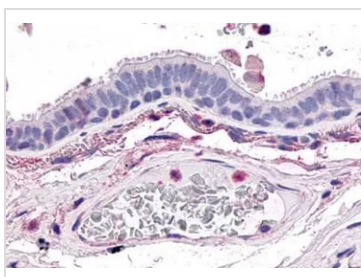


For full product information, images and publications, please visit our [website](#).

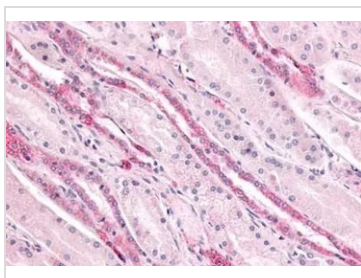
## DATA IMAGES

**GTX70541 IHC-P Image**

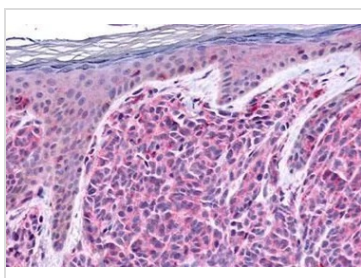
IHC-P analysis of human lung, adenocarcinoma tissue using GTX70541 GPR4 antibody.  
Antigen retrieval : Heat-induced antigen retrieval

**GTX70541 IHC-P Image**

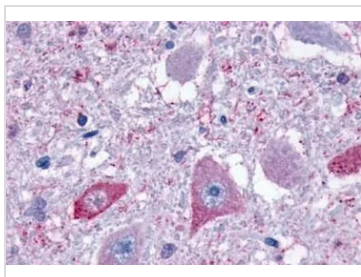
IHC-P analysis of human lung, respiratory epithelium tissue using GTX70541 GPR4 antibody.  
Antigen retrieval : Heat-induced antigen retrieval

**GTX70541 IHC-P Image**

IHC-P analysis of kidney, renal tubules tissue using GTX70541 GPR4 antibody.

**GTX70541 IHC-P Image**

IHC-P analysis of skin, melanoma tissue using GTX70541 GPR4 antibody.

**GTX70541 IHC-P Image**

IHC-P analysis of brain medulla neurons within hypoglossal nucleus tissue using GTX70541 GPR4 antibody.



For full product information, images and publications, please visit our [website](#).