

MT2 antibody

Cat. No. GTX70721

Host	Rabbit
Clonality	Polyclonal
Isotype	IgG
Applications	IHC-P
Reactivity	Human

Package
25 µg

Applications

Application Note

*Optimal dilutions/concentrations should be determined by the researcher.

Suggested dilution	Recommended dilution
IHC-P	8 µg/ml

Not tested in other applications.

Properties

Form	Liquid
Buffer	PBS
Preservative	0.1% Sodium azide
Storage	Store as concentrated solution. Centrifuge briefly prior to opening vial. For short-term storage (1-2 weeks), store at 4°C. For long-term storage, aliquot and store at -20°C or below. Avoid multiple freeze-thaw cycles.
Concentration	1 mg/ml (Please refer to the vial label for the specific concentration.)
Immunogen	Synthetic 16 amino acid peptide from 3rd cytoplasmic domain of human MTNR1B.
Purification	Purified by affinity chromatography
Conjugation	Unconjugated

Note

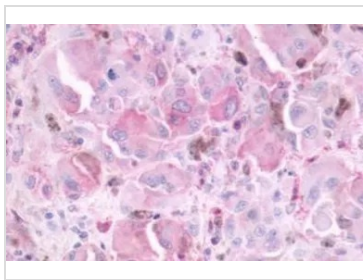
For laboratory research use only. Not for any clinical, therapeutic, or diagnostic use in humans or animals. Not for animal or human consumption.

Purchasers shall not, and agree not to enable third parties to, analyze, copy, reverse engineer or otherwise attempt to determine the structure or sequence of the product.

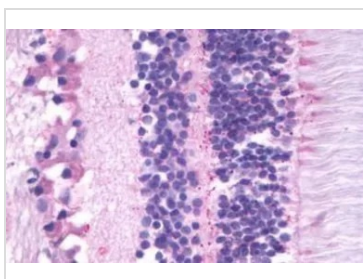


For full product information, images and publications, please visit our [website](#).

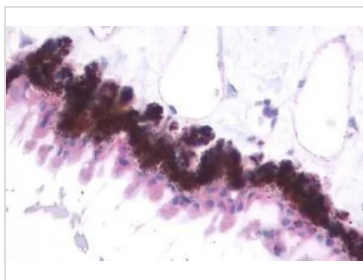
DATA IMAGES

**GTX70721 IHC-P Image**

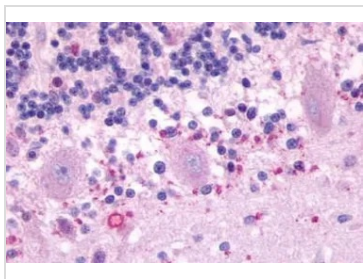
IHC-P analysis of human skin, melanoma tissue using GTX70721 MT2 antibody.
Antigen retrieval : Heat-induced antigen retrieval

**GTX70721 IHC-P Image**

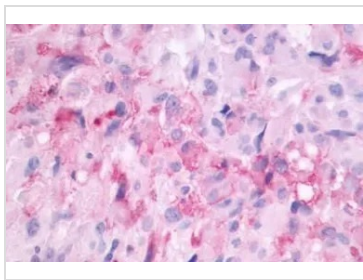
IHC-P analysis of human eye, retina tissue using GTX70721 MT2 antibody.
Antigen retrieval : Heat-induced antigen retrieval

**GTX70721 IHC-P Image**

IHC-P analysis of human eye tissue using GTX70721 MT2 antibody.
Antigen retrieval : Heat-induced antigen retrieval

**GTX70721 IHC-P Image**

IHC-P analysis of human brain tissue using GTX70721 MT2 antibody.
Antigen retrieval : Heat-induced antigen retrieval

**GTX70721 IHC-P Image**

IHC-P analysis of brain, glioblastoma tissue using GTX70721 MT2 antibody.



For full product information, images and publications, please visit our [website](#).