

## Somatostatin receptor 1 antibody

**Cat. No. GTX70725**

<b>Host</b>	Rabbit
<b>Clonality</b>	Polyclonal
<b>Isotype</b>	IgG
<b>Applications</b>	IHC-P
<b>Reactivity</b>	Human, Mouse, Rabbit, Bovine, Dog, Hamster, Pig, Monkey, Horse

Package

25 µg

## Applications

**Application Note**

\*Optimal dilutions/concentrations should be determined by the researcher.

Suggested dilution	Recommended dilution
IHC-P	13 µg/ml

Not tested in other applications.

**Calculated MW** 43 kDa. ([Note](#))

## Properties

<b>Form</b>	Liquid
<b>Buffer</b>	PBS
<b>Preservative</b>	0.1% Sodium azide
<b>Storage</b>	Store as concentrated solution. Centrifuge briefly prior to opening vial. For short-term storage (1-2 weeks), store at 4°C. For long-term storage, aliquot and store at -20°C or below. Avoid multiple freeze-thaw cycles.
<b>Concentration</b>	1 mg/ml (Please refer to the vial label for the specific concentration.)
<b>Immunogen</b>	Synthetic 16 amino acid peptide from N-terminal extracellular domain of human SSTR1.
<b>Purification</b>	Purified by affinity chromatography
<b>Conjugation</b>	Unconjugated

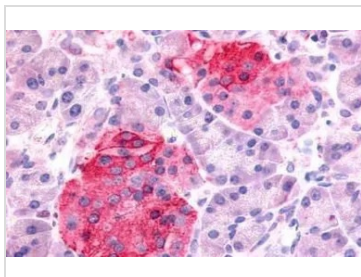
**Note**

For laboratory research use only. Not for any clinical, therapeutic, or diagnostic use in humans or animals. Not for animal or human consumption.

Purchasers shall not, and agree not to enable third parties to, analyze, copy, reverse engineer or otherwise attempt to determine the structure or sequence of the product.

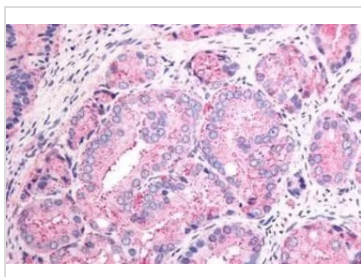
For full product information, images and publications, please visit our [website](#).

## DATA IMAGES

**GTX70725 IHC-P Image**

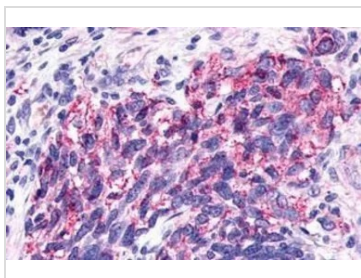
IHC-P analysis of human pancreas, islets of langerhans tissue using GTX70725 Somatostatin receptor 1 antibody.

Antigen retrieval : Heat-induced antigen retrieval

**GTX70725 IHC-P Image**

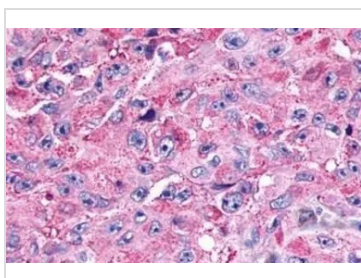
IHC-P analysis of human prostate, carcinoma tissue using GTX70725 Somatostatin receptor 1 antibody.

Antigen retrieval : Heat-induced antigen retrieval

**GTX70725 IHC-P Image**

IHC-P analysis of human lung, small cell carcinoma tissue using GTX70725 Somatostatin receptor 1 antibody.

Antigen retrieval : Heat-induced antigen retrieval

**GTX70725 IHC-P Image**

IHC-P analysis of human skin, melanoma tissue using GTX70725 Somatostatin receptor 1 antibody.

Antigen retrieval : Heat-induced antigen retrieval



For full product information, images and publications, please visit our [website](#).