

MC4 Receptor antibody

Cat. No. GTX70733

Host	Rabbit
Clonality	Polyclonal
Isotype	IgG
Application	ICC/IF, IHC-P
Reactivity	Human, Monkey, Horse

Package

25 µg

APPLICATION

Application Note

*Optimal dilutions/concentrations should be determined by the researcher.

Suggested dilution	Recommended dilution
ICC/IF	7.5 - 10 µg/ml
IHC-P	4 - 8 µg/ml

Not tested in other applications.

Calculated MW 37 kDa. ([Note](#))

PROPERTIES

Form	Liquid
Buffer	PBS
Preservative	0.1% Sodium azide
Storage	Store as concentrated solution. Centrifuge briefly prior to opening vial. For short-term storage (1-2 weeks), store at 4°C. For long-term storage, aliquot and store at -20°C or below. Avoid multiple freeze-thaw cycles.
Concentration	1 mg/ml (Please refer to the vial label for the specific concentration.)
Immunogen	Synthetic 17 amino acid peptide from N-terminal extracellular domain of human MC4 Receptor.
Purification	Purified by affinity chromatography
Conjugation	Unconjugated

Note

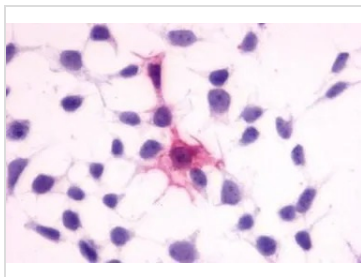
For laboratory research use only. Not for any clinical, therapeutic, or diagnostic use in humans or animals. Not for animal or human consumption.

Purchasers shall not, and agree not to enable third parties to, analyze, copy, reverse engineer or otherwise attempt to determine the structure or sequence of the product.



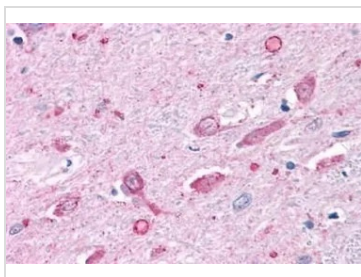
For full product information, images and publications, please visit our [website](#).

DATA IMAGES



GTX70733 ICC/IF Image

ICC/IF analysis of HEK293 transfected with MC4 Receptor using GTX70733 MC4 Receptor antibody.



GTX70733 IHC-P Image

IHC-P analysis of human brain tissue using GTX70733 MC4 Receptor antibody.

Antigen retrieval : Heat-induced antigen retrieval



For full product information, images and publications, please visit our [website](#).