

## EDG2 antibody

Cat. No. GTX70799

Host	Rabbit
Clonality	Polyclonal
Isotype	IgG
Applications	IHC-P, IHC
Reactivity	Human, Monkey

References ( 1 )

Package

25 µg

## Applications

## Application Note

\*Optimal dilutions/concentrations should be determined by the researcher.

Suggested dilution	Recommended dilution
IHC-P	1 - 2 µg/ml
IHC	Assay dependent

Not tested in other applications.

## Properties

Form	Liquid
Buffer	PBS
Preservative	0.1% Sodium azide
Storage	Store as concentrated solution. Centrifuge briefly prior to opening vial. For short-term storage (1-2 weeks), store at 4°C. For long-term storage, aliquot and store at -20°C or below. Avoid multiple freeze-thaw cycles.
Concentration	1 mg/ml (Please refer to the vial label for the specific concentration.)
Immunogen	Synthetic 15 amino acid peptide from N-terminal extracellular domain of human EDG2.
Purification	Purified by affinity chromatography
Conjugation	Unconjugated

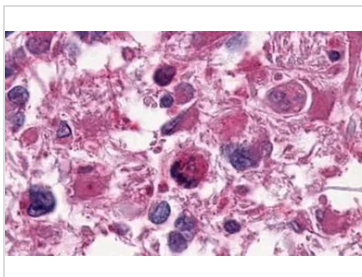
## Note

For laboratory research use only. Not for any clinical, therapeutic, or diagnostic use in humans or animals. Not for animal or human consumption.

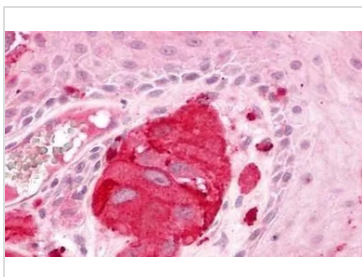
Purchasers shall not, and agree not to enable third parties to, analyze, copy, reverse engineer or otherwise attempt to determine the structure or sequence of the product.



For full product information, images and publications, please visit our [website](#).

**DATA IMAGES**

**GTX70799 IHC-P Image**

IHC-P analysis of brain, glioblastoma tissue using GTX70799 EDG2 antibody.


**GTX70799 IHC-P Image**

IHC-P analysis of skin, melanoma tissue using GTX70799 EDG2 antibody.



For full product information, images and publications, please visit our [website](#).