

GPR84 antibody

Cat. No. GTX70841

Host	Rabbit
Clonality	Polyclonal
Isotype	IgG
Applications	IHC-P
Reactivity	Human, Monkey, Horse

Package

25 µg

Applications

Application Note

*Optimal dilutions/concentrations should be determined by the researcher.

Suggested dilution	Recommended dilution
IHC-P	Assay dependent

Not tested in other applications.

Properties

Form	Liquid
Buffer	PBS
Preservative	0.1% Sodium azide
Storage	Store as concentrated solution. Centrifuge briefly prior to opening vial. For short-term storage (1-2 weeks), store at 4°C. For long-term storage, aliquot and store at -20°C or below. Avoid multiple freeze-thaw cycles.
Concentration	1 mg/ml (Please refer to the vial label for the specific concentration.)
Immunogen	Synthetic 19 amino acid peptide from 2nd extracellular domain of human GPR84.
Purification	Purified by affinity chromatography
Conjugation	Unconjugated

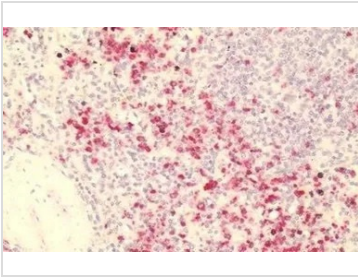
Note

For laboratory research use only. Not for any clinical, therapeutic, or diagnostic use in humans or animals. Not for animal or human consumption.

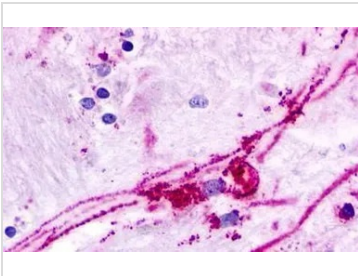
Purchasers shall not, and agree not to enable third parties to, analyze, copy, reverse engineer or otherwise attempt to determine the structure or sequence of the product.



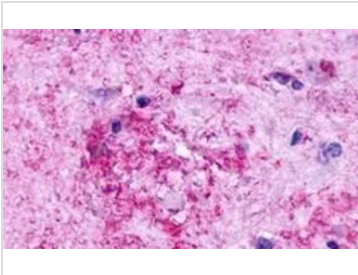
For full product information, images and publications, please visit our [website](#).

DATA IMAGES

GTX70841 IHC-P Image

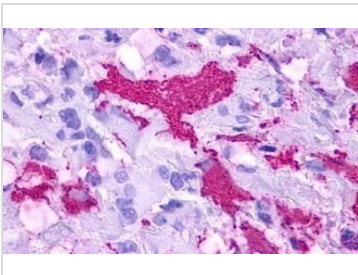
IHC-P analysis of human, spleen tissue using GTX70841 GPR84 antibody.


GTX70841 IHC-P Image

IHC-P analysis of brain, caudate, neuronal processes tissue using GTX70841 GPR84 antibody.


GTX70841 IHC-P Image

IHC-P analysis of brain, Alzheimer's disease, senile plaque tissue using GTX70841 GPR84 antibody.


GTX70841 IHC-P Image

IHC-P analysis of brain, glioblastoma tissue using GTX70841 GPR84 antibody.



For full product information, images and publications, please visit our [website](#).