

EBI2 antibody

Cat. No. GTX70863

Host	Rabbit
Clonality	Polyclonal
Isotype	IgG
Applications	IHC-P
Reactivity	Human, Mouse, Rat

Package

25 µg

Applications

Application Note

*Optimal dilutions/concentrations should be determined by the researcher.

Suggested dilution	Recommended dilution
IHC-P	5 - 10 µg/ml

Not tested in other applications.

Properties

Form	Liquid
Buffer	PBS
Preservative	0.1% Sodium azide
Storage	Store as concentrated solution. Centrifuge briefly prior to opening vial. For short-term storage (1-2 weeks), store at 4°C. For long-term storage, aliquot and store at -20°C or below. Avoid multiple freeze-thaw cycles.
Concentration	1 mg/ml (Please refer to the vial label for the specific concentration.)
Immunogen	Synthetic 20 amino acid peptide from 3rd cytoplasmic domain of human GPR183 / EBI2.
Purification	Purified by affinity chromatography
Conjugation	Unconjugated

Note

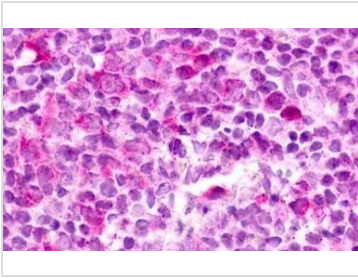
For laboratory research use only. Not for any clinical, therapeutic, or diagnostic use in humans or animals. Not for animal or human consumption.

Purchasers shall not, and agree not to enable third parties to, analyze, copy, reverse engineer or otherwise attempt to determine the structure or sequence of the product.



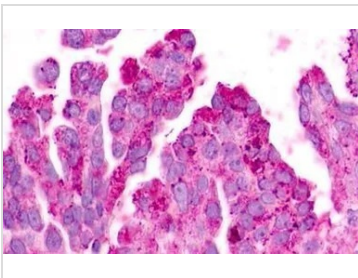
For full product information, images and publications, please visit our [website](#).

DATA IMAGES



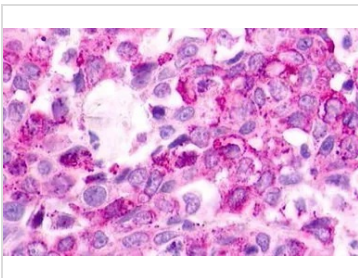
GTX70863 IHC-P Image

IHC-P analysis of human lymph node tissue using GTX70863 EBI2 antibody.
Antigen retrieval : Heat-induced antigen retrieval



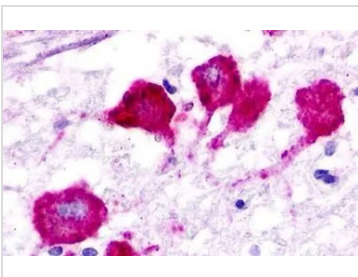
GTX70863 IHC-P Image

IHC-P analysis of ovary, carcinoma tissue using GTX70863 EBI2 antibody.



GTX70863 IHC-P Image

IHC-P analysis of breast, adenocarcinoma tissue using GTX70863 EBI2 antibody.



GTX70863 IHC-P Image

IHC-P analysis of brain, medulla tissue using GTX70863 EBI2 antibody.



For full product information, images and publications, please visit our [website](#).