

## ROR gamma antibody

Cat. No. GTX70887

Host	Rabbit
Clonality	Polyclonal
Isotype	IgG
Applications	IHC-P
Reactivity	Human, Monkey, Bat

## Package

25 µg

## Applications

## Application Note

\*Optimal dilutions/concentrations should be determined by the researcher.

Suggested dilution	Recommended dilution
IHC-P	20 µg/ml

Not tested in other applications.

## Properties

Form	Liquid
Buffer	PBS
Preservative	0.1% Sodium azide
Storage	Store as concentrated solution. Centrifuge briefly prior to opening vial. For short-term storage (1-2 weeks), store at 4°C. For long-term storage, aliquot and store at -20°C or below. Avoid multiple freeze-thaw cycles.
Concentration	1 mg/ml (Please refer to the vial label for the specific concentration.)
Immunogen	Synthetic 18 amino acid peptide from ligand-binding domain of human ROR Gamma.
Purification	Purified by affinity chromatography
Conjugation	Unconjugated

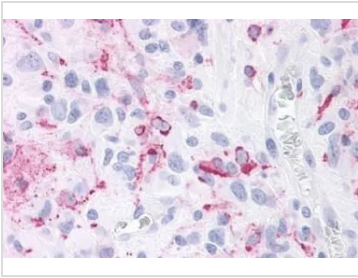
## Note

For laboratory research use only. Not for any clinical, therapeutic, or diagnostic use in humans or animals. Not for animal or human consumption.

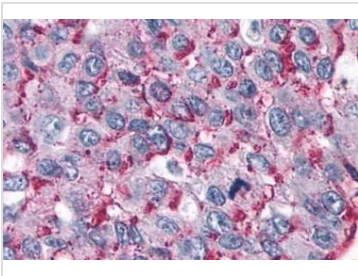
Purchasers shall not, and agree not to enable third parties to, analyze, copy, reverse engineer or otherwise attempt to determine the structure or sequence of the product.



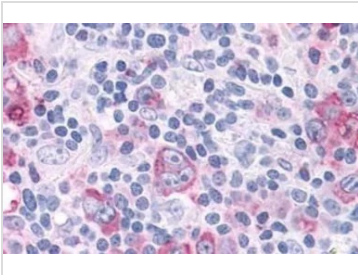
For full product information, images and publications, please visit our [website](#).

**DATA IMAGES**

**GTX70887 IHC-P Image**

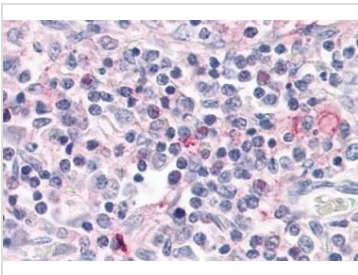
IHC-P analysis of brain, glioblastoma tissue using GTX70887 ROR gamma antibody.


**GTX70887 IHC-P Image**

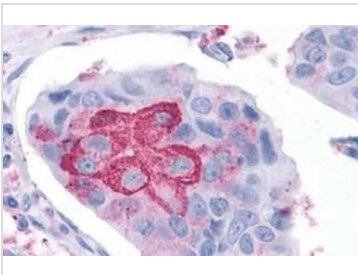
IHC-P analysis of lung, non small cell carcinoma tissue using GTX70887 ROR gamma antibody.


**GTX70887 IHC-P Image**

IHC-P analysis of human lymph node, hodgkins lymphoma tissue using GTX70887 ROR gamma antibody.  
Antigen retrieval : Heat-induced antigen retrieval


**GTX70887 IHC-P Image**

IHC-P analysis of human thymus tissue using GTX70887 ROR gamma antibody.  
Antigen retrieval : Heat-induced antigen retrieval


**GTX70887 IHC-P Image**

IHC-P analysis of human breast, carcinoma tissue using GTX70887 ROR gamma antibody.  
Antigen retrieval : Heat-induced antigen retrieval



For full product information, images and publications, please visit our [website](#).