

# mGluR8 antibody

**Cat. No. GTX70999**

<b>Host</b>	Rabbit
<b>Clonality</b>	Polyclonal
<b>Isotype</b>	IgG
<b>Application</b>	IHC-P
<b>Reactivity</b>	Human, Rabbit, Monkey, Bat, Horse

**Package**

25 µg

## APPLICATION

### Application Note

\*Optimal dilutions/concentrations should be determined by the researcher.

Suggested dilution	Recommended dilution
IHC-P	21 µg/ml
Not tested in other applications.	

**Calculated MW** 102 kDa. ([Note](#))

## PROPERTIES

<b>Form</b>	Liquid
<b>Buffer</b>	PBS
<b>Preservative</b>	0.1% Sodium azide
<b>Storage</b>	Store as concentrated solution. Centrifuge briefly prior to opening vial. For short-term storage (1-2 weeks), store at 4°C. For long-term storage, aliquot and store at -20°C or below. Avoid multiple freeze-thaw cycles.
<b>Concentration</b>	1 mg/ml (Please refer to the vial label for the specific concentration.)
<b>Immunogen</b>	Synthetic 18 amino acid peptide from N-terminal extracellular domain of human GRM8 / MGLUR8.
<b>Purification</b>	Purified by affinity chromatography
<b>Conjugation</b>	Unconjugated

### Note

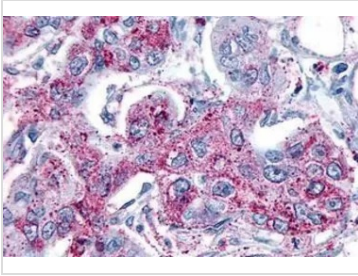
For laboratory research use only. Not for any clinical, therapeutic, or diagnostic use in humans or animals. Not for animal or human consumption.

Purchasers shall not, and agree not to enable third parties to, analyze, copy, reverse engineer or otherwise attempt to determine the structure or sequence of the product.



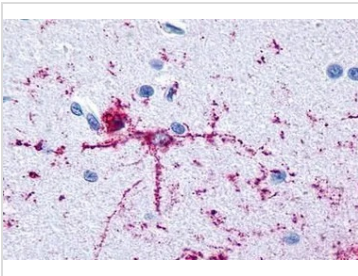
For full product information, images and publications, please visit our [website](#).

## DATA IMAGES



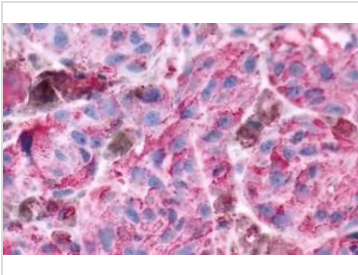
### GTX70999 IHC-P Image

IHC-P analysis of human pancreas, carcinoma tissue using GTX70999 mGluR8 antibody.  
Antigen retrieval : Heat-induced antigen retrieval



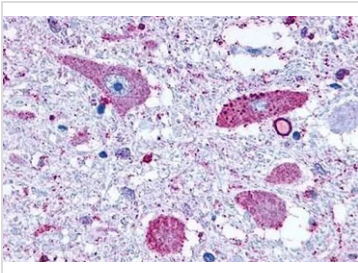
### GTX70999 IHC-P Image

IHC-P analysis of human brain, neurons and glia tissue using GTX70999 mGluR8 antibody.  
Antigen retrieval : Heat-induced antigen retrieval



### GTX70999 IHC-P Image

IHC-P analysis of human skin, melanoma tissue using GTX70999 mGluR8 antibody.  
Antigen retrieval : Heat-induced antigen retrieval



### GTX70999 IHC-P Image

IHC-P analysis of brain, medulla tissue using GTX70999 mGluR8 antibody.



For full product information, images and publications, please visit our [website](https://www.genetex.com).