

Leukotriene B4 Receptor antibody

Cat. No. GTX71031

Host	Rabbit
Clonality	Polyclonal
Isotype	IgG
Application	IHC-P, IHC-Fr
Reactivity	Human, Mouse, Rat, Rabbit, Hamster, Monkey, Horse

Package

25 µg

APPLICATION

Application Note

*Optimal dilutions/concentrations should be determined by the researcher.

Suggested dilution	Recommended dilution
IHC-P	10 - 15 µg/ml
IHC-Fr	Assay dependent

Not tested in other applications.

Calculated MW 38 kDa. ([Note](#))

PROPERTIES

Form	Liquid
Buffer	PBS
Preservative	0.1% Sodium azide
Storage	Store as concentrated solution. Centrifuge briefly prior to opening vial. For short-term storage (1-2 weeks), store at 4°C. For long-term storage, aliquot and store at -20°C or below. Avoid multiple freeze-thaw cycles.
Concentration	1 mg/ml (Please refer to the vial label for the specific concentration.)
Immunogen	Synthetic 16 amino acid peptide from 3rd cytoplasmic domain of human Leukotriene B4 Receptor.
Purification	Purified by affinity chromatography
Conjugation	Unconjugated

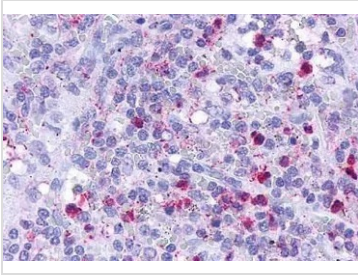
Note

For laboratory research use only. Not for any clinical, therapeutic, or diagnostic use in humans or animals. Not for animal or human consumption.

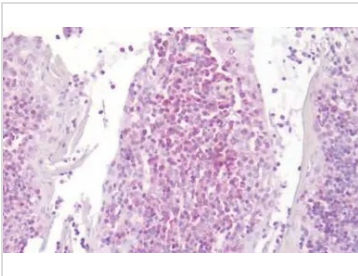
Purchasers shall not, and agree not to enable third parties to, analyze, copy, reverse engineer or otherwise attempt to determine the structure or sequence of the product.



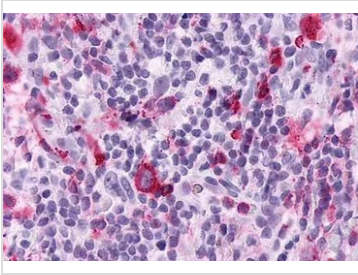
For full product information, images and publications, please visit our [website](#).

DATA IMAGES

GTX71031 IHC-P Image

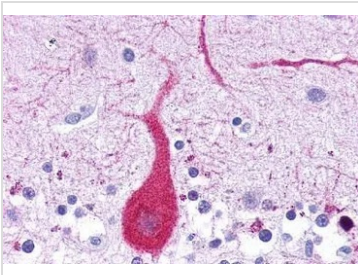
IHC-P analysis of human spleen, red pulp tissue using GTX71031 Leukotriene B4 Receptor antibody.
Antigen retrieval : Heat-induced antigen retrieval


GTX71031 IHC-P Image

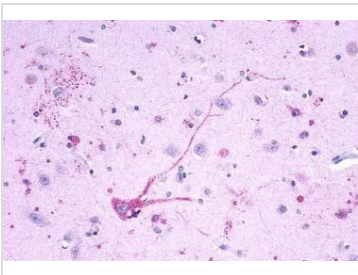
IHC-P analysis of human tonsil tissue using GTX71031 Leukotriene B4 Receptor antibody.


GTX71031 IHC-P Image

IHC-P analysis of human lymph node, hodgkins lymphoma tissue using GTX71031 Leukotriene B4 Receptor antibody.
Antigen retrieval : Heat-induced antigen retrieval


GTX71031 IHC-P Image

IHC-P analysis of brain, cerebellum, purkinje neuron tissue using GTX71031 Leukotriene B4 Receptor antibody.


GTX71031 IHC-P Image

IHC-P analysis of brain, amygdala, neurons and glia tissue using GTX71031 Leukotriene B4 Receptor antibody.



For full product information, images and publications, please visit our [website](#).