

# PTGFR antibody

**Cat. No. GTX71101**

<b>Host</b>	Rabbit
<b>Clonality</b>	Polyclonal
<b>Isotype</b>	IgG
<b>Applications</b>	ICC/IF, IHC-P
<b>Reactivity</b>	Human, Monkey, Horse

**Package**

25 µg

## Applications

### Application Note

\*Optimal dilutions/concentrations should be determined by the researcher.

Suggested dilution	Recommended dilution
ICC/IF	Assay dependent
IHC-P	4 - 8 µg/ml

Not tested in other applications.

## Properties

<b>Form</b>	Liquid
<b>Buffer</b>	PBS
<b>Preservative</b>	0.1% Sodium azide
<b>Storage</b>	Store as concentrated solution. Centrifuge briefly prior to opening vial. For short-term storage (1-2 weeks), store at 4°C. For long-term storage, aliquot and store at -20°C or below. Avoid multiple freeze-thaw cycles.
<b>Concentration</b>	1 mg/ml (Please refer to the vial label for the specific concentration.)
<b>Immunogen</b>	Synthetic 16 amino acid peptide from 2nd extracellular domain of human PTGFR.
<b>Purification</b>	Purified by affinity chromatography
<b>Conjugation</b>	Unconjugated

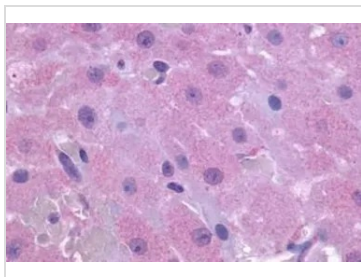
### Note

For laboratory research use only. Not for any clinical, therapeutic, or diagnostic use in humans or animals. Not for animal or human consumption.

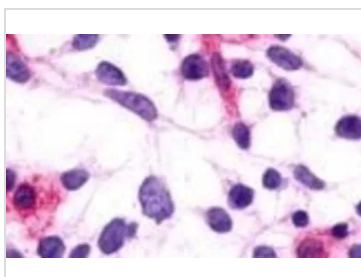
Purchasers shall not, and agree not to enable third parties to, analyze, copy, reverse engineer or otherwise attempt to determine the structure or sequence of the product.



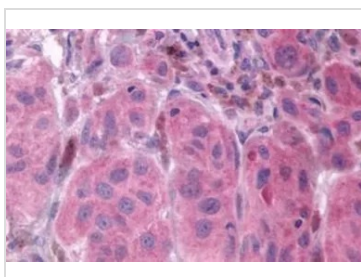
For full product information, images and publications, please visit our [website](#).

**DATA IMAGES**

**GTx71101 IHC-P Image**

IHC-P analysis of human ovary tissue using GTx71101 PTGFR antibody.  
Antigen retrieval : Heat-induced antigen retrieval


**GTx71101 ICC/IF Image**

ICC/IF analysis of HEK293 transfected with PTGFR using GTx71101 PTGFR antibody.


**GTx71101 IHC-P Image**

IHC-P analysis of human skin, melanoma tissue using GTx71101 PTGFR antibody.  
Antigen retrieval : Heat-induced antigen retrieval



For full product information, images and publications, please visit our [website](#).