

## Latrophilin 3 antibody

Cat. No. GTX71183

Host	Rabbit
Clonality	Polyclonal
Isotype	IgG
Applications	IHC-P
Reactivity	Human, Mouse, Rat, Hamster, Chicken, Monkey, Horse

## Package

25 µg

## Applications

## Application Note

\*Optimal dilutions/concentrations should be determined by the researcher.

Suggested dilution	Recommended dilution
IHC-P	4 - 6 µg/ml

Not tested in other applications.

## Properties

Form	Liquid
Buffer	PBS
Preservative	0.1% Sodium azide
Storage	Store as concentrated solution. Centrifuge briefly prior to opening vial. For short-term storage (1-2 weeks), store at 4°C. For long-term storage, aliquot and store at -20°C or below. Avoid multiple freeze-thaw cycles.
Concentration	0.91 mg/ml (Please refer to the vial label for the specific concentration.)
Immunogen	Synthetic 16 amino acid peptide from C-terminus of human LPHN3.
Purification	Purified by affinity chromatography
Conjugation	Unconjugated

## Note

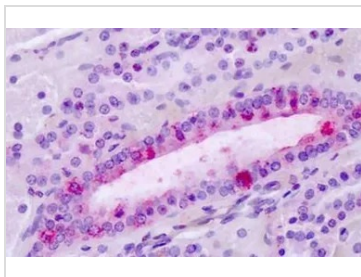
For laboratory research use only. Not for any clinical, therapeutic, or diagnostic use in humans or animals. Not for animal or human consumption.

Purchasers shall not, and agree not to enable third parties to, analyze, copy, reverse engineer or otherwise attempt to determine the structure or sequence of the product.



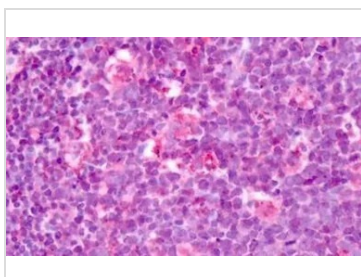
For full product information, images and publications, please visit our [website](#).

## DATA IMAGES



### GTx71183 IHC-P Image

IHC-P analysis of human tonsil tissue using GTx71183 Latrophilin 3 antibody.  
Antigen retrieval : Heated 0.01 M sodium citrate buffer (pH 6.0) for 20 minutes  
Dilution : 4-6 µg/ml



### GTx71183 IHC-P Image

IHC-P analysis of human tonsil tissue using GTx71183 Latrophilin 3 antibody.  
Antigen retrieval : Heated 0.01 M sodium citrate buffer (pH 6.0) for 20 minutes  
Dilution : 4-6 µg/ml



For full product information, images and publications, please visit our [website](#).