

## GPR32 antibody

Cat. No. GTX71225

Host	Rabbit
Clonality	Polyclonal
Isotype	IgG
Applications	WB, IHC-P, FCM, Neutralizing/Inhibition
Reactivity	Human, Rat

References ( 12 )

Package

25 µg

## Applications

## Application Note

\*Optimal dilutions/concentrations should be determined by the researcher.

Suggested dilution	Recommended dilution
WB	Assay dependent
IHC-P	38 µg/ml
FCM	Assay dependent
Neutralizing/Inhibition	Assay dependent

Not tested in other applications.

**Calculated MW** 40 kDa. ( [Note](#) )

**Product Note** Knockdown/Knockout validation was supported by references (PMID:35856414)

## Properties

Form	Liquid
Buffer	PBS
Preservative	0.1% Sodium azide
Storage	Store as concentrated solution. Centrifuge briefly prior to opening vial. For short-term storage (1-2 weeks), store at 4°C. For long-term storage, aliquot and store at -20°C or below. Avoid multiple freeze-thaw cycles.
Concentration	1 mg/ml (Please refer to the vial label for the specific concentration.)
Immunogen	Synthetic 16 amino acid peptide from 3rd extracellular domain of human GPR32.
Purification	Purified by affinity chromatography
Conjugation	Unconjugated

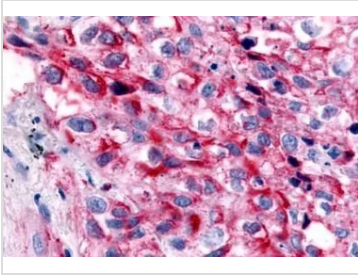


For full product information, images and publications, please visit our [website](#).

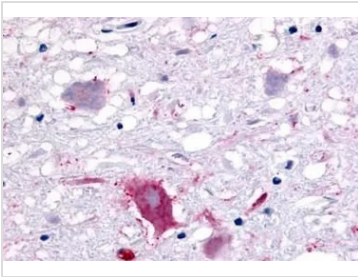
For laboratory research use only. Not for any clinical, therapeutic, or diagnostic use in humans or animals. Not for animal or human consumption.

**Note**

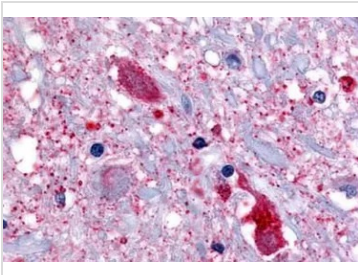
Purchasers shall not, and agree not to enable third parties to, analyze, copy, reverse engineer or otherwise attempt to determine the structure or sequence of the product.

**DATA IMAGES**

**GTX71225 IHC-P Image**

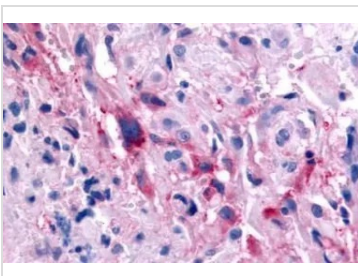
IHC-P analysis of lung, non small cell carcinoma tissue using GTX71225 GPR32 antibody.


**GTX71225 IHC-P Image**

IHC-P analysis of human brain, neurons and glia tissue using GTX71225 GPR32 antibody.  
Antigen retrieval : Heat-induced antigen retrieval


**GTX71225 IHC-P Image**

IHC-P analysis of brain, medulla, spinal trigeminal nucleus tissue using GTX71225 GPR32 antibody.


**GTX71225 IHC-P Image**

IHC-P analysis of brain, glioblastoma tissue using GTX71225 GPR32 antibody.



For full product information, images and publications, please visit our [website](#).