

## GPR32 antibody

Cat. No. GTX71225

<b>Host</b>	Rabbit
<b>Clonality</b>	Polyclonal
<b>Isotype</b>	IgG
<b>Applications</b>	WB, IHC-P, FCM, Neutralizing /Inhibition
<b>Reactivity</b>	Human, Rat

References ( 12 )

Package

25 µg

## Applications

## Application Note

\*Optimal dilutions/concentrations should be determined by the researcher.

Suggested dilution	Recommended dilution
WB	Assay dependent
IHC-P	38 µg/ml
FCM	Assay dependent
Neutralizing /Inhibition	Assay dependent

Not tested in other applications.

**Calculated MW** 40 kDa. ( [Note](#) )**Product Note** Knockdown/Knockout validation was supported by references (PMID:35856414)

## Properties

<b>Form</b>	Liquid
<b>Buffer</b>	PBS
<b>Preservative</b>	0.1% Sodium azide
<b>Storage</b>	Store as concentrated solution. Centrifuge briefly prior to opening vial. For short-term storage (1-2 weeks), store at 4°C. For long-term storage, aliquot and store at -20°C or below. Avoid multiple freeze-thaw cycles.
<b>Concentration</b>	1 mg/ml (Please refer to the vial label for the specific concentration.)
<b>Immunogen</b>	Synthetic 16 amino acid peptide from 3rd extracellular domain of human GPR32.
<b>Purification</b>	Purified by affinity chromatography
<b>Conjugation</b>	Unconjugated



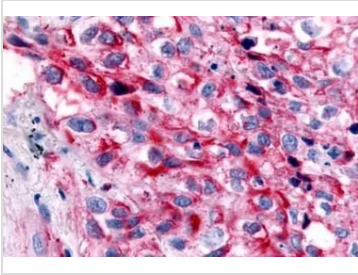
For full product information, images and publications, please visit our [website](#).

For laboratory research use only. Not for any clinical, therapeutic, or diagnostic use in humans or animals. Not for animal or human consumption.

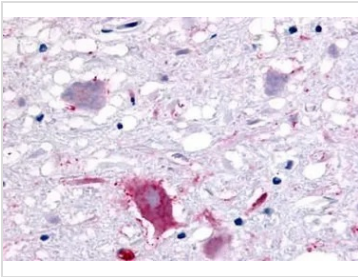
**Note**

Purchasers shall not, and agree not to enable third parties to, analyze, copy, reverse engineer or otherwise attempt to determine the structure or sequence of the product.

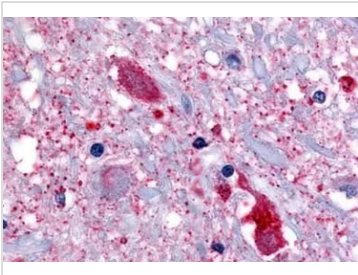
## DATA IMAGES

**GTX71225 IHC-P Image**

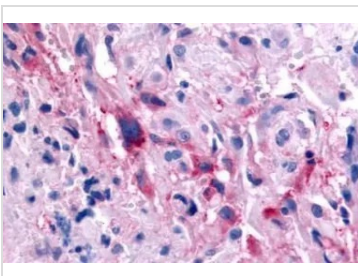
IHC-P analysis of lung, non small cell carcinoma tissue using GTX71225 GPR32 antibody.

**GTX71225 IHC-P Image**

IHC-P analysis of human brain, neurons and glia tissue using GTX71225 GPR32 antibody.  
Antigen retrieval : Heat-induced antigen retrieval

**GTX71225 IHC-P Image**

IHC-P analysis of brain, medulla, spinal trigeminal nucleus tissue using GTX71225 GPR32 antibody.

**GTX71225 IHC-P Image**

IHC-P analysis of brain, glioblastoma tissue using GTX71225 GPR32 antibody.



For full product information, images and publications, please visit our [website](#).