

XPR1 antibody

Cat. No. GTX71325

Host	Rabbit
Clonality	Polyclonal
Isotype	IgG
Applications	ICC/IF, IHC-P
Reactivity	Human, Mouse, Rat, Rabbit, Bovine, Dog, Hamster, Chicken, Pig, Monkey, Bat, Horse

Package

25 µg

Applications

Application Note

*Optimal dilutions/concentrations should be determined by the researcher.

Suggested dilution	Recommended dilution
ICC/IF	8 - 15 µg/ml
IHC-P	8 µg/ml

Not tested in other applications.

Properties

Form	Liquid
Buffer	PBS
Preservative	0.1% Sodium azide
Storage	Store as concentrated solution. Centrifuge briefly prior to opening vial. For short-term storage (1-2 weeks), store at 4°C. For long-term storage, aliquot and store at -20°C or below. Avoid multiple freeze-thaw cycles.
Concentration	1 mg/ml (Please refer to the vial label for the specific concentration.)
Immunogen	Synthetic 16 amino acid peptide from N-terminal extracellular domain of human XPR1.
Purification	Purified by affinity chromatography
Conjugation	Unconjugated

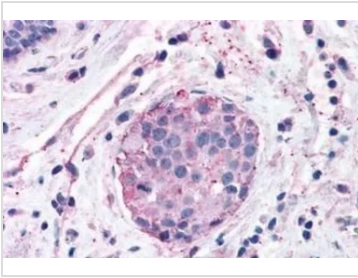
Note

For laboratory research use only. Not for any clinical, therapeutic, or diagnostic use in humans or animals. Not for animal or human consumption.

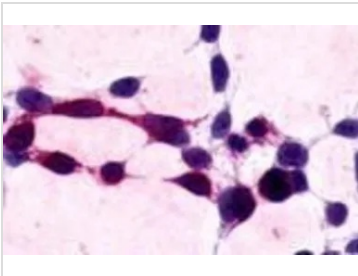
Purchasers shall not, and agree not to enable third parties to, analyze, copy, reverse engineer or otherwise attempt to determine the structure or sequence of the product.



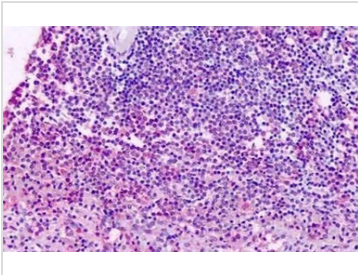
For full product information, images and publications, please visit our [website](#).

DATA IMAGES

GTX71325 IHC-P Image

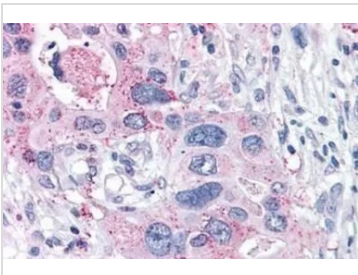
IHC-P analysis of human breast, carcinoma tissue using GTX71325 XPR1 antibody.
Antigen retrieval : Heat-induced antigen retrieval


GTX71325 ICC/IF Image

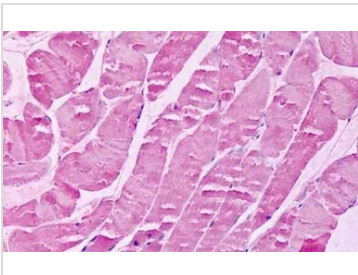
ICC/IF analysis of HEK293 transfected with XPR1 using GTX71325 XPR1 antibody.


GTX71325 IHC-P Image

IHC-P analysis of human spleen tissue using GTX71325 XPR1 antibody.
Antigen retrieval : Heat-induced antigen retrieval
Dilution : 8 µg/ml


GTX71325 IHC-P Image

IHC-P analysis of human pancreas, carcinoma tissue using GTX71325 XPR1 antibody.
Antigen retrieval : Heat-induced antigen retrieval


GTX71325 IHC-P Image

IHC-P analysis of human skeletal muscle tissue using GTX71325 XPR1 antibody.
Antigen retrieval : Heat-induced antigen retrieval
Dilution : 8 µg/ml



For full product information, images and publications, please visit our [website](https://www.genetex.com).