

mGluR6 antibody

Cat. No. GTX71531

Host	Rabbit
Clonality	Polyclonal
Isotype	IgG
Applications	WB, IHC-P
Reactivity	Human, Mouse, Rat, Rabbit, Bovine, Dog, Hamster, Pig, Monkey, Bat

Package

25 µg

Applications

Application Note

*Optimal dilutions/concentrations should be determined by the researcher.

Suggested dilution	Recommended dilution
WB	Assay dependent
IHC-P	12 µg/ml

Not tested in other applications.

Calculated MW 95 kDa. ([Note](#))

Properties

Form	Liquid
Buffer	PBS
Preservative	0.1% Sodium azide
Storage	Store as concentrated solution. Centrifuge briefly prior to opening vial. For short-term storage (1-2 weeks), store at 4°C. For long-term storage, aliquot and store at -20°C or below. Avoid multiple freeze-thaw cycles.
Concentration	1 mg/ml (Please refer to the vial label for the specific concentration.)
Immunogen	Synthetic 15 amino acid peptide from N-terminal extracellular domain of human GRM6 / MGLUR6.
Purification	Purified by affinity chromatography
Conjugation	Unconjugated

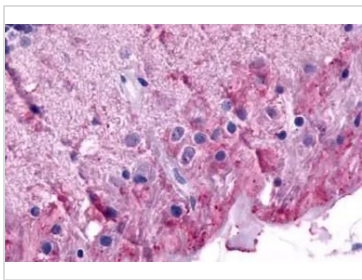
Note

For laboratory research use only. Not for any clinical, therapeutic, or diagnostic use in humans or animals. Not for animal or human consumption.

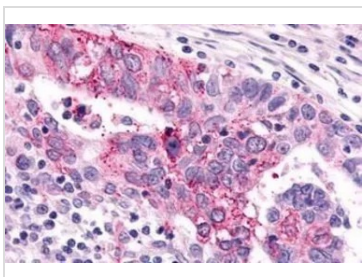
Purchasers shall not, and agree not to enable third parties to, analyze, copy, reverse engineer or otherwise attempt to determine the structure or sequence of the product.

For full product information, images and publications, please visit our [website](#).

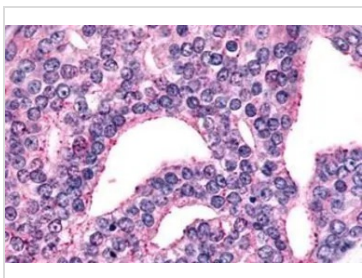
DATA IMAGES

**GTX71531 IHC-P Image**

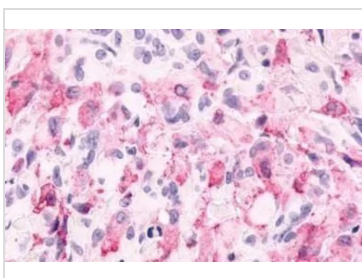
IHC-P analysis of eye, retina, ganglion cells tissue using GTX71531 mGluR6 antibody.

**GTX71531 IHC-P Image**

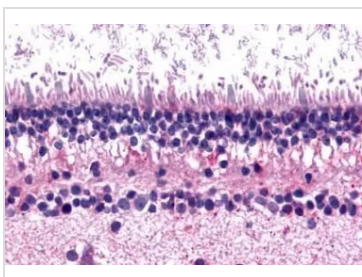
IHC-P analysis of human ovary, carcinoma tissue using GTX71531 mGluR6 antibody.
Antigen retrieval : Heat-induced antigen retrieval

**GTX71531 IHC-P Image**

IHC-P analysis of human prostate, carcinoma tissue using GTX71531 mGluR6 antibody.
Antigen retrieval : Heat-induced antigen retrieval

**GTX71531 IHC-P Image**

IHC-P analysis of human brain, glioblastoma tissue using GTX71531 mGluR6 antibody.
Antigen retrieval : Heat-induced antigen retrieval

**GTX71531 IHC-P Image**

IHC-P analysis of eye, retina tissue using GTX71531 mGluR6 antibody.



For full product information, images and publications, please visit our [website](#).