

## Frizzled 8 antibody

Cat. No. GTX71543

<b>Host</b>	Rabbit
<b>Clonality</b>	Polyclonal
<b>Isotype</b>	IgG
<b>Applications</b>	IHC-P
<b>Reactivity</b>	Human, Mouse, Rat, Monkey

Package  
25 µg

## Applications

## Application Note

\*Optimal dilutions/concentrations should be determined by the researcher.

Suggested dilution	Recommended dilution
IHC-P	30 µg/ml

Not tested in other applications.

## Properties

<b>Form</b>	Liquid
<b>Buffer</b>	PBS
<b>Preservative</b>	0.1% Sodium azide
<b>Storage</b>	Store as concentrated solution. Centrifuge briefly prior to opening vial. For short-term storage (1-2 weeks), store at 4°C. For long-term storage, aliquot and store at -20°C or below. Avoid multiple freeze-thaw cycles.
<b>Concentration</b>	1 mg/ml (Please refer to the vial label for the specific concentration.)
<b>Immunogen</b>	Synthetic 15 amino acid peptide from N-terminal extracellular domain of human FZD8 / Frizzled 8.
<b>Purification</b>	Purified by affinity chromatography
<b>Conjugation</b>	Unconjugated

## Note

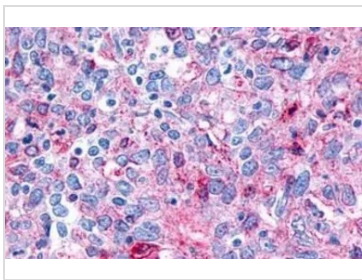
For laboratory research use only. Not for any clinical, therapeutic, or diagnostic use in humans or animals. Not for animal or human consumption.

Purchasers shall not, and agree not to enable third parties to, analyze, copy, reverse engineer or otherwise attempt to determine the structure or sequence of the product.

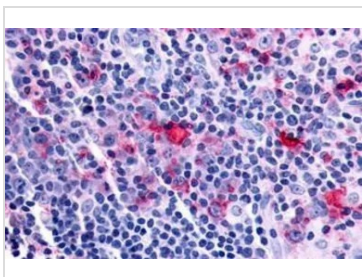


For full product information, images and publications, please visit our [website](#).

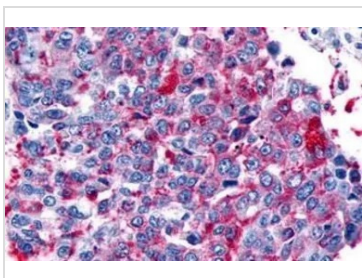
## DATA IMAGES

**GTX71543 IHC-P Image**

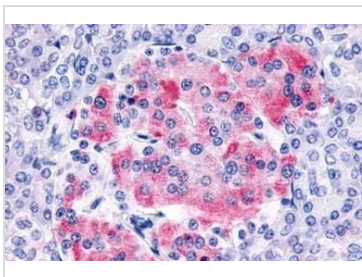
IHC-P analysis of human ovary, carcinoma tissue using GTX71543 Frizzled 8 antibody.  
Antigen retrieval : Heat-induced antigen retrieval

**GTX71543 IHC-P Image**

IHC-P analysis of human lymph node, hodgkins lymphoma tissue using GTX71543 Frizzled 8 antibody.  
Antigen retrieval : Heat-induced antigen retrieval

**GTX71543 IHC-P Image**

IHC-P analysis of human lung, non-small cell carcinoma tissue using GTX71543 Frizzled 8 antibody.  
Antigen retrieval : Heat-induced antigen retrieval

**GTX71543 IHC-P Image**

IHC-P analysis of human pancreas, islet of langerhans tissue using GTX71543 Frizzled 8 antibody.  
Antigen retrieval : Heat-induced antigen retrieval



For full product information, images and publications, please visit our [website](#).