

T1R3 antibody

Cat. No. GTX71575

Host	Rabbit
Clonality	Polyclonal
Isotype	IgG
Applications	IHC-P
Reactivity	Human

Package

25 µg

Applications

Application Note

*Optimal dilutions/concentrations should be determined by the researcher.

Suggested dilution	Recommended dilution
IHC-P	19 µg/ml

Not tested in other applications.

Properties

Form	Liquid
Buffer	PBS
Preservative	0.1% Sodium azide
Storage	Store as concentrated solution. Centrifuge briefly prior to opening vial. For short-term storage (1-2 weeks), store at 4°C. For long-term storage, aliquot and store at -20°C or below. Avoid multiple freeze-thaw cycles.
Concentration	1 mg/ml (Please refer to the vial label for the specific concentration.)
Immunogen	Synthetic 20 amino acid peptide from N-terminal extracellular domain of human TAS1R3.
Purification	Purified by affinity chromatography
Conjugation	Unconjugated

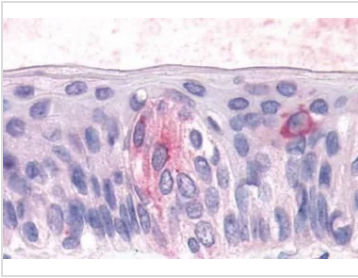
Note

For laboratory research use only. Not for any clinical, therapeutic, or diagnostic use in humans or animals. Not for animal or human consumption.

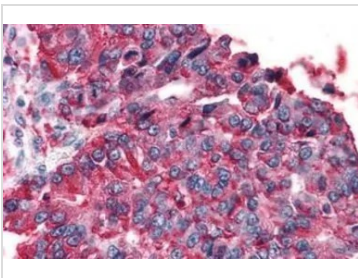
Purchasers shall not, and agree not to enable third parties to, analyze, copy, reverse engineer or otherwise attempt to determine the structure or sequence of the product.



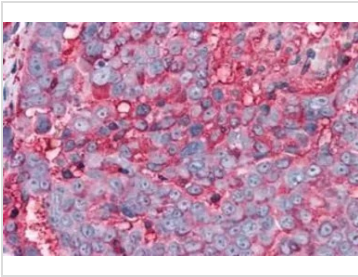
For full product information, images and publications, please visit our [website](#).

DATA IMAGES

GTX71575 IHC-P Image

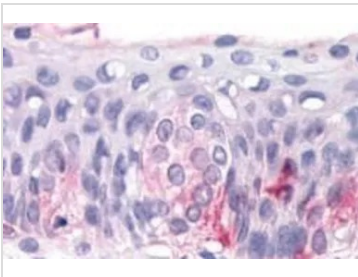
IHC-P analysis of human tongue, taste receptor cells tissue using GTX71575 T1R3 antibody.
Antigen retrieval : Heat-induced antigen retrieval


GTX71575 IHC-P Image

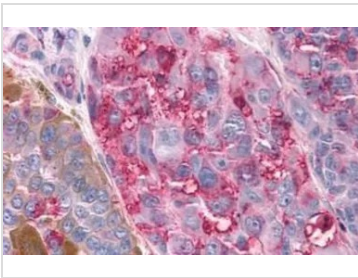
IHC-P analysis of human lung, non-small cell carcinoma tissue using GTX71575 T1R3 antibody.
Antigen retrieval : Heat-induced antigen retrieval


GTX71575 IHC-P Image

IHC-P analysis of human ovary, carcinoma tissue using GTX71575 T1R3 antibody.
Antigen retrieval : Heat-induced antigen retrieval


GTX71575 IHC-P Image

IHC-P analysis of tongue, taste receptor tissue using GTX71575 T1R3 antibody.


GTX71575 IHC-P Image

IHC-P analysis of human skin, melanoma tissue using GTX71575 T1R3 antibody.
Antigen retrieval : Heat-induced antigen retrieval



For full product information, images and publications, please visit our [website](https://www.genetex.com).