

TAS1R1 antibody

Cat. No. GTX71789

Host	Rabbit
Clonality	Polyclonal
Isotype	IgG
Application	IHC-P
Reactivity	Human, Bovine, Dog, Pig, Horse

Package

25 µg

APPLICATION

Application Note

*Optimal dilutions/concentrations should be determined by the researcher.

Suggested dilution	Recommended dilution
IHC-P	6 µg/ml
Not tested in other applications.	

Calculated MW 93 kDa. ([Note](#))

PROPERTIES

Form	Liquid
Buffer	PBS
Preservative	0.1% Sodium azide
Storage	Store as concentrated solution. Centrifuge briefly prior to opening vial. For short-term storage (1-2 weeks), store at 4°C. For long-term storage, aliquot and store at -20°C or below. Avoid multiple freeze-thaw cycles.
Concentration	0.6 mg/ml (Please refer to the vial label for the specific concentration.)
Immunogen	Synthetic 16 amino acid peptide from 3rd cytoplasmic domain of human TAS1R1.
Purification	Purified by affinity chromatography
Conjugation	Unconjugated

Note

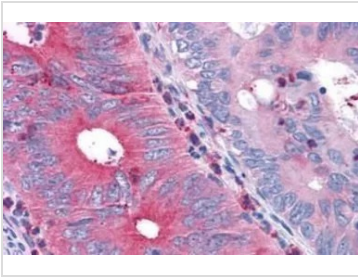
For laboratory research use only. Not for any clinical, therapeutic, or diagnostic use in humans or animals. Not for animal or human consumption.

Purchasers shall not, and agree not to enable third parties to, analyze, copy, reverse engineer or otherwise attempt to determine the structure or sequence of the product.

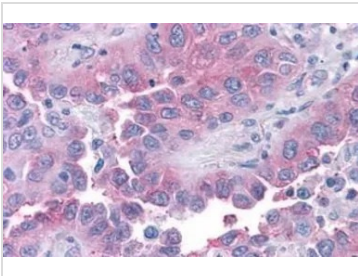


For full product information, images and publications, please visit our [website](#).

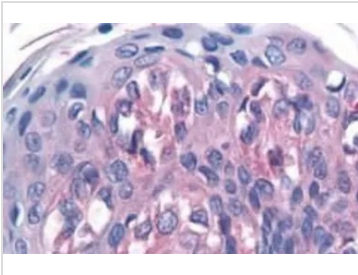
DATA IMAGES


GTX71789 IHC-P Image

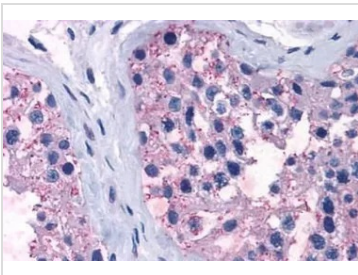
IHC-P analysis of human colon, carcinoma tissue using GTX71789 TAS1R1 antibody.
Antigen retrieval : Heat-induced antigen retrieval


GTX71789 IHC-P Image

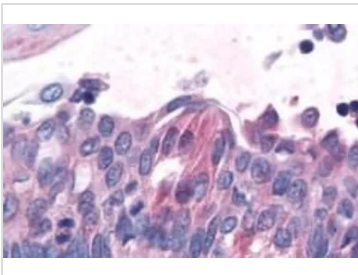
IHC-P analysis of human lung, non-small cell carcinoma tissue using GTX71789 TAS1R1 antibody.
Antigen retrieval : Heat-induced antigen retrieval


GTX71789 IHC-P Image

IHC-P analysis of tongue, taste receptor tissue using GTX71789 TAS1R1 antibody.


GTX71789 IHC-P Image

IHC-P analysis of human testis tissue using GTX71789 TAS1R1 antibody.
Antigen retrieval : Heat-induced antigen retrieval


GTX71789 IHC-P Image

IHC-P analysis of tongue, taste receptor tissue using GTX71789 TAS1R1 antibody.



For full product information, images and publications, please visit our [website](#).