

Melanoma associated antigen antibody [HMB45]

Cat. No. GTX71957

Host	Mouse
Clonality	Monoclonal
Isotype	IgG1
Application	WB, ICC/IF, IHC-P
Reactivity	Human

Reference (3)
Package
500 µl

APPLICATION

Application Note

For IF: Use at an assay dependent dilution. For IHC-P: Use at an assay dependent dilution. Optimal dilutions/concentrations should be determined by the end user.

PROPERTIES

Form	Liquid
Buffer	PBS pH7.4, 0.2% BSA
Preservative	0.09% Sodium azide
Storage	Store as concentrated solution. Centrifuge briefly prior to opening vial. Store at 4°C. DO NOT FREEZE.
Concentration	0.2 mg/ml (Please refer to the vial label for the specific concentration.)
Immunogen	Extract of pigmented melanoma metastases from lymph nodes.
Purification	Protein A affinity purified
Conjugation	Unconjugated

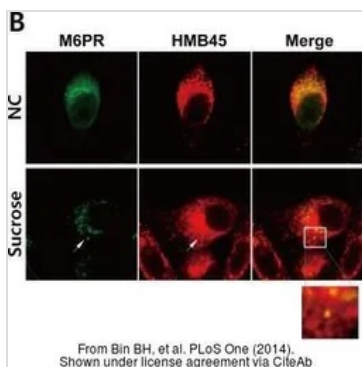
Note

For laboratory research use only. Not for any clinical, therapeutic, or diagnostic use in humans or animals. Not for animal or human consumption.

Purchasers shall not, and agree not to enable third parties to, analyze, copy, reverse engineer or otherwise attempt to determine the structure or sequence of the product.



For full product information, images and publications, please visit our [website](#).

DATA IMAGES

GTx71957 ICC/IF Image

The data was published in the journal PLoS One in 2014. [PMID: 25170965](https://pubmed.ncbi.nlm.nih.gov/25170965/)



For full product information, images and publications, please visit our [website](https://www.genetex.com).