

CD30 antibody [Ber-H2]

Cat. No. GTX71958

Host	Mouse
Clonality	Monoclonal
Isotype	IgG1
Applications	IHC-P
Reactivity	Human

References (1)

Package

500 µl

Applications

Application Note

*Optimal dilutions/concentrations should be determined by the researcher.

Suggested dilution	Recommended dilution
IHC-P	1:50-1:100

Note : Recommendations for antigen retrieval : EDTA buffer pH 8.0

Not tested in other applications.

Product Note

This antibody recognizes a single chain glycoprotein of 105/120kDa, identified as CD30/Ki-1. Its epitope is located between aa112-412.

Properties

Form	Liquid
Buffer	Tissue culture supernatant
Preservative	0.05% Sodium azide
Storage	Store as concentrated solution. Centrifuge briefly prior to opening vial. Store at 4°C.
Immunogen	Co cell line established from a patient with Hodgkin's disease of T-cell lineage.
Purification	Unpurified
Conjugation	Unconjugated

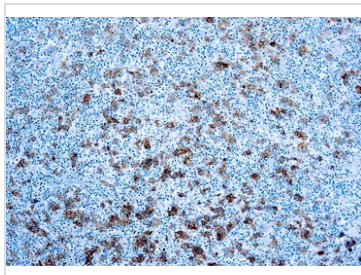
Note

For laboratory research use only. Not for any clinical, therapeutic, or diagnostic use in humans or animals. Not for animal or human consumption.

Purchasers shall not, and agree not to enable third parties to, analyze, copy, reverse engineer or otherwise attempt to determine the structure or sequence of the product.



For full product information, images and publications, please visit our [website](#).

DATA IMAGES

GTX71958 IHC-P Image

IHC-P analysis of human Hodgkin's lymphoma tissue using GTX71958 CD30 antibody [Ber-H2].



For full product information, images and publications, please visit our [website](#).