

# Cytokeratin 20 antibody [Ks20.8]

**Cat. No. GTX72046**

<b>Host</b>	Mouse
<b>Clonality</b>	Monoclonal
<b>Isotype</b>	IgG2a
<b>Applications</b>	ICC/IF, IHC-P, IHC (Formalin)
<b>Reactivity</b>	Human, Mouse

**References** ( 3 )

**Package**

500 µl

## Applications

### Application Note

Used to identify and differentiate different carcinomas. This antibody can be used on formalin-fixed, paraffin-embedded tissue sections. Prolonged fixation in buffered formalin can destroy the epitope. For optimal results, tissue sections should either be treated with high-temperature based antigenic unmasking technique, or with proteolytic enzymes such as AutoZyme or Pronase. The optimal conditions should be determined by the individual laboratory. This antibody is not suitable for use on cryostat sections or cell smears due to non-specific cross-reaction with negative epithelia. Dilute according to the particular application being used. In general, the 0.05M Borate pH 8.0 containing 0.15M Sodium Chloride, 0.05% Sodium Azide, is a good diluent to use with most antibodies.

### Product Note

This antibody reacts with the 46 kD cytokeratin polypeptide 20, a type I cytokeratin that is found in duodenal epithelium, glandular gastric and pyloric epithelium, urothelium and Merkel cells of the epidermis. It does not cross-react with other cytokeratin polypeptides or other intermediate filaments. This cytokeratin is expressed in colon carcinoma, and to a lesser degree in gastric carcinoma. Other positive carcinomas include gall bladder, bile duct, ductal cells of pancreas, mucinous ovarian tumors and transitional cell carcinomas. Carcinoma of breast, lung, endometrium and non-mucinous tumors of ovary are not recognized by This antibody. Merkel cell carcinomas of the skin show strong reactivity with This antibody.

## Properties

<b>Form</b>	Liquid
<b>Buffer</b>	PBS
<b>Preservative</b>	0.1% Sodium azide
<b>Storage</b>	Store as concentrated solution. Centrifuge briefly prior to opening vial. Store at 4°C. DO NOT FREEZE.
<b>Concentration</b>	Batch dependent (Please refer to the vial label for the specific concentration.)
<b>Immunogen</b>	Cytokeratin preparation of villi of human duodenal mucosa.
<b>Conjugation</b>	Unconjugated

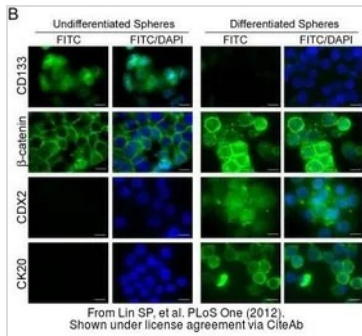
### Note

For laboratory research use only. Not for any clinical, therapeutic, or diagnostic use in humans or animals. Not for animal or human consumption.

Purchasers shall not, and agree not to enable third parties to, analyze, copy, reverse engineer or otherwise attempt to determine the structure or sequence of the product.



For full product information, images and publications, please visit our [website](#).

**DATA IMAGES**

**GTX72046 ICC/IF Image**

The data was published in the journal PLoS One in 2012. [PMID: 23185379](https://pubmed.ncbi.nlm.nih.gov/23185379/)



For full product information, images and publications, please visit our [website](https://www.genetex.com).