

CD8 antibody [144B]

Cat. No. GTX72053

| | |
|---------------------|------------|
| Host | Mouse |
| Clonality | Monoclonal |
| Isotype | IgG1 |
| Applications | IHC-P |
| Reactivity | Human |

Package
500 µl

Applications

Application Note

*Optimal dilutions/concentrations should be determined by the researcher.

| Suggested dilution | Recommended dilution |
|--------------------|----------------------|
| IHC-P | 1:50-1:100 |

Note : Recommendations for antigen retrieval : EDTA buffer pH 8.0

Not tested in other applications.

Properties

| | |
|----------------------|---|
| Form | Liquid |
| Buffer | PBS |
| Preservative | 0.09% Sodium azide |
| Storage | Store as concentrated solution. Centrifuge briefly prior to opening vial. Store at 4°C. |
| Concentration | Batch dependent (Please refer to the vial label for the specific concentration.) |
| Immunogen | Synthetic peptide comprised of 13 C terminal amino acids from the cytoplasmic domain of the CD8 molecule. |
| Purification | Purified IgG |
| Conjugation | Unconjugated |

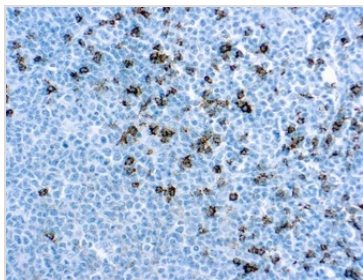
Note

For laboratory research use only. Not for any clinical, therapeutic, or diagnostic use in humans or animals. Not for animal or human consumption.

Purchasers shall not, and agree not to enable third parties to, analyze, copy, reverse engineer or otherwise attempt to determine the structure or sequence of the product.



For full product information, images and publications, please visit our [website](#).

DATA IMAGES

GTX72053 IHC-P Image

IHC-P analysis of human tonsil tissue using GTX72053 CD8 antibody [144B].



For full product information, images and publications, please visit our [website](#).