

Mast cell chymase antibody [CC1]

Cat. No. GTX72388

Host	Mouse
Clonality	Monoclonal
Isotype	IgG1
Applications	WB, IHC-P
Reactivity	Human, Mouse

References (2)

Package

500 µl

Applications

Application Note

*Optimal dilutions/concentrations should be determined by the researcher.

Suggested dilution	Recommended dilution
WB	Assay dependent
IHC-P	1:50-1:100

Note : Recommendations for antigen retrieval : Citrate Buffer pH 6.0

Not tested in other applications.

Calculated MW 27 kDa. ([Note](#))

Properties

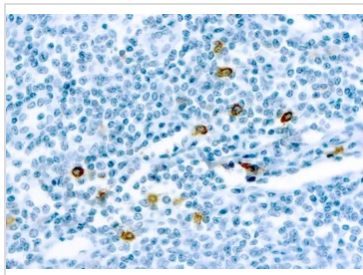
Form	Liquid
Buffer	PBS
Preservative	0.09% Sodium azide
Storage	Store as concentrated solution. Centrifuge briefly prior to opening vial. Store at 4°C.
Concentration	Batch dependent (Please refer to the vial label for the specific concentration.)
Immunogen	BALB/C mice were injected with a purified human skin chymase.
Purification	Purified IgG
Conjugation	Unconjugated

Note

For laboratory research use only. Not for any clinical, therapeutic, or diagnostic use in humans or animals. Not for animal or human consumption.

Purchasers shall not, and agree not to enable third parties to, analyze, copy, reverse engineer or otherwise attempt to determine the structure or sequence of the product.

For full product information, images and publications, please visit our [website](#).

DATA IMAGES

GTX72388 IHC-P Image

IHC-P analysis of human tonsil tissue using GTX72388 Mast cell chymase antibody [CC1].



For full product information, images and publications, please visit our [website](#).