

Involucrin antibody [SY5]

Cat. No. GTX72415

Host	Mouse
Clonality	Monoclonal
Isotype	IgG1
Applications	ICC/IF, IHC-P, IHC-Fr, ELISA
Reactivity	Human, Rat, Dog, Pig, Monkey, Gorilla, Owl

References (3)

Package

500 µl

Applications

Application Note

ELISA (For coating, order Ab without BSA).

Properties

Form	Liquid
Buffer	PBS, 0.2% BSA
Preservative	0.09% Sodium azide
Storage	Store as concentrated solution. Centrifuge briefly prior to opening vial. Store at 4°C. DO NOT FREEZE.
Concentration	0.2 mg/ml (Please refer to the vial label for the specific concentration.)
Immunogen	Human keratinocytes' involucrin
Purification	Protein A affinity purified
Conjugation	Unconjugated

Note

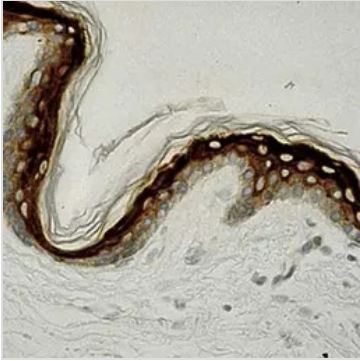
For laboratory research use only. Not for any clinical, therapeutic, or diagnostic use in humans or animals. Not for animal or human consumption.

Purchasers shall not, and agree not to enable third parties to, analyze, copy, reverse engineer or otherwise attempt to determine the structure or sequence of the product.



For full product information, images and publications, please visit our [website](#).

DATA IMAGES

**GTX72415 IHC-P Image**

Formalin fixed paraffin embedded human skin stained with Involucrin antibody (cat. # GTX72415).



For full product information, images and publications, please visit our [website](#).