

EpCAM antibody [VU-1D9] (Biotin)

Cat. No. GTX72682

Host	Mouse
Clonality	Monoclonal
Isotype	IgG1
Application	IHC-P, FACS
Reactivity	Human

Reference (9)

Package

100 µl

APPLICATION

Application Note

*Optimal dilutions/concentrations should be determined by the researcher.

Suggested dilution	Recommended dilution
IHC-P	Assay dependent
FACS	Assay dependent

Not tested in other applications.

Calculated MW 35 kDa. ([Note](#))

PROPERTIES

Form	Liquid
Buffer	BSA
Preservative	Sodium azide
Storage	Store as concentrated solution. Centrifuge briefly prior to opening vial. Store at 4°C. DO NOT FREEZE.
Immunogen	Small cell lung carcinoma cells
Purification	Unpurified
Conjugation	Biotin

Note

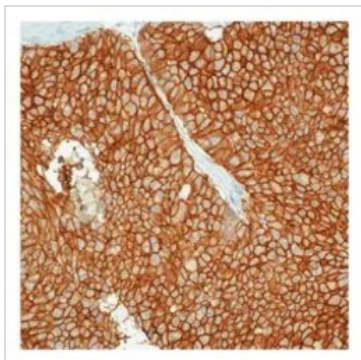
For laboratory research use only. Not for any clinical, therapeutic, or diagnostic use in humans or animals. Not for animal or human consumption.

Purchasers shall not, and agree not to enable third parties to, analyze, copy, reverse engineer or otherwise attempt to determine the structure or sequence of the product.



For full product information, images and publications, please visit our [website](#).

DATA IMAGES



GTx72682 IHC-P Image

IHC-P analysis of human breast carcinoma tissue using GTx72682 EpCAM antibody [VU-1D9] (Biotin).



For full product information, images and publications, please visit our [website](#).