

# Fibronectin antibody

**Cat. No. GTX72724**

|                     |            |
|---------------------|------------|
| <b>Host</b>         | Rabbit     |
| <b>Clonality</b>    | Polyclonal |
| <b>Isotype</b>      | IgG        |
| <b>Applications</b> | IHC-P, IHC |
| <b>Reactivity</b>   | Human, Pig |

References ( 4 )

Package

500 µl

## Applications

### Application Note

Immunohistochemistry (IHC) 1:100-1:200 for 30 minute at room temperature using polymer system or streptavidin-biotin system. Formalin-fixed paraffin-embedded (FFPE) tissue sections and cell smears require antigen retriever, boiling tissue in 10 mM citrate buffer, pH 6.0 for 10-20 minute, followed by cooling at room temperature for 20 minutes.

## Properties

|                      |                                                                                                        |
|----------------------|--------------------------------------------------------------------------------------------------------|
| <b>Form</b>          | Liquid                                                                                                 |
| <b>Buffer</b>        | PBS                                                                                                    |
| <b>Preservative</b>  | 0.05% Sodium azide                                                                                     |
| <b>Storage</b>       | Store as concentrated solution. Centrifuge briefly prior to opening vial. Store at 4°C. DO NOT FREEZE. |
| <b>Concentration</b> | 2 mg/ml (Please refer to the vial label for the specific concentration.)                               |
| <b>Immunogen</b>     | Purified human Fibronectin from human plasma.                                                          |
| <b>Purification</b>  | Protein A purified                                                                                     |
| <b>Conjugation</b>   | Unconjugated                                                                                           |

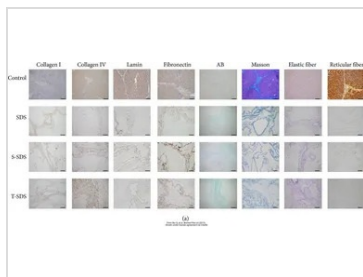
### Note

For laboratory research use only. Not for any clinical, therapeutic, or diagnostic use in humans or animals. Not for animal or human consumption.

Purchasers shall not, and agree not to enable third parties to, analyze, copy, reverse engineer or otherwise attempt to determine the structure or sequence of the product.



For full product information, images and publications, please visit our [website](#).

**DATA IMAGES**

**GTX72724 IHC-P Image**

The data was published in the journal Biomed Res Int in 2015. [PMID: 25918720](https://pubmed.ncbi.nlm.nih.gov/25918720/)



For full product information, images and publications, please visit our [website](https://www.genetex.com).