

Protein A antibody

Cat. No. GTX72895

Host	Goat
Clonality	Polyclonal
Isotype	IgG
Applications	WB, IP, ELISA
Reactivity	Staphylococcus aureus

Package
1 ml

Applications

Application Note

*Optimal dilutions/concentrations should be determined by the researcher.

Suggested dilution	Recommended dilution
WB	1:2000-1:10000
IP	Assay dependent
ELISA	1:20000-1:100000

Not tested in other applications.

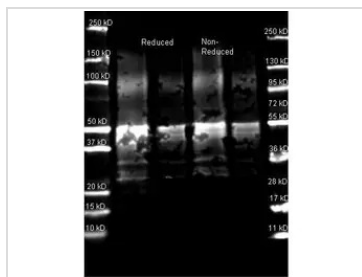
Properties

Form	Liquid
Buffer	10mM Sodium Phosphate, 150mM NaCl
Preservative	0.01% Sodium azide
Storage	Store as concentrated solution. Centrifuge briefly prior to opening vial. For short-term storage (1-2 weeks), store at 4°C. For long-term storage, aliquot and store at -20°C or below. Avoid multiple freeze-thaw cycles.
Concentration	90 mg/ml (Please refer to the vial label for the specific concentration.)
Immunogen	Protein A collected from Staphylococcus aureus
Conjugation	Unconjugated
Note	For laboratory research use only. Not for any clinical, therapeutic, or diagnostic use in humans or animals. Not for animal or human consumption. Purchasers shall not, and agree not to enable third parties to, analyze, copy, reverse engineer or otherwise attempt to determine the structure or sequence of the product.



For full product information, images and publications, please visit our [website](#).

DATA IMAGES



GTX72895 WB Image

WB analysis of recombinant *Saccharomyces cerevisiae* Protein A under reducing and non-reducing conditions using GTX72895 Protein A antibody.

Lane 1 and 3 : 1 μ g

Lane 2 and 4 : 0.25 μ g

Dilution : 1:5000



For full product information, images and publications, please visit our [website](#).