

NSE antibody (ready-to-use)

Cat. No. GTX72911

| | |
|--------------|------------|
| Host | Rabbit |
| Clonality | Polyclonal |
| Isotype | IgG |
| Applications | IHC-P |
| Reactivity | Human |

Package
6 ml

Applications

Application Note

*Optimal dilutions/concentrations should be determined by the researcher.

| Suggested dilution | Recommended dilution |
|--------------------|----------------------|
| IHC-P | Assay dependent |

Note : Recommendations for antigen retrieval : Citrate Buffer pH 6.0

Not tested in other applications.

Product Note

This antibody reacts with human isoenzymes of neuron specific enolase containing γ subunits. This antibody gives a specific staining in neurons of the brain, in islets of Langerhans in pancreas and in peripheral nerves of the skin. No staining with other tissue types has been seen.

Properties

| | |
|---------------|---|
| Form | Liquid |
| Buffer | PBS |
| Preservative | 0.09% Sodium azide |
| Storage | Store as concentrated solution. Centrifuge briefly prior to opening vial. Store at 4°C. |
| Concentration | Batch dependent (Please refer to the vial label for the specific concentration.) |
| Immunogen | Neuron specific enolase (γ - γ isoenzyme) isolated from bovine brain. |
| Purification | Purified IgG |
| Conjugation | Unconjugated |

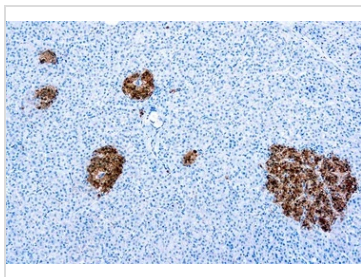
Note

For laboratory research use only. Not for any clinical, therapeutic, or diagnostic use in humans or animals. Not for animal or human consumption.

Purchasers shall not, and agree not to enable third parties to, analyze, copy, reverse engineer or otherwise attempt to determine the structure or sequence of the product.



For full product information, images and publications, please visit our [website](#).

DATA IMAGES

GTX72911 IHC-P Image

IHC-P analysis of human pancreas tissue using GTX72911 NSE antibody (ready-to-use).



For full product information, images and publications, please visit our [website](#).