

# Cyclin B1 antibody

**Cat. No. GTX73034**

<b>Host</b>	Rabbit
<b>Clonality</b>	Polyclonal
<b>Isotype</b>	IgG
<b>Applications</b>	WB, IHC-P, IP
<b>Reactivity</b>	Human

**Package**  
500 µl

## Applications

### Application Note

For IHC-P: Use at an assay dependent dilution. Staining of formalin-fixed tissues requires boiling tissue sections in 10mM citrate buffer, pH 6.0, for 10-20 min followed by cooling at RT for 20 min. For IP: Use at an assay dependent dilution. For WB: Use at an assay dependent dilution. Optimal dilutions/concentrations should be determined by the researcher.

**Calculated MW** 48 kDa. ( [Note](#) )

## Properties

<b>Form</b>	Liquid
<b>Buffer</b>	PBS, 0.2% BSA
<b>Preservative</b>	0.09% Sodium azide
<b>Storage</b>	Store as concentrated solution. Centrifuge briefly prior to opening vial. Store at 4°C. DO NOT FREEZE.
<b>Concentration</b>	1 mg/ml (Please refer to the vial label for the specific concentration.)
<b>Immunogen</b>	A synthetic peptide derived from the C-terminus of human cyclin B1
<b>Purification</b>	Purified
<b>Conjugation</b>	Unconjugated

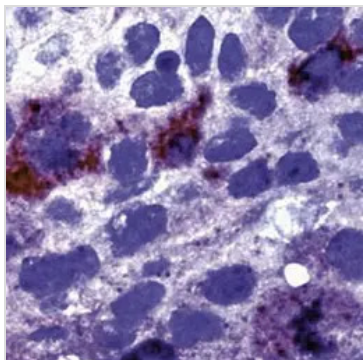
### Note

For laboratory research use only. Not for any clinical, therapeutic, or diagnostic use in humans or animals. Not for animal or human consumption.

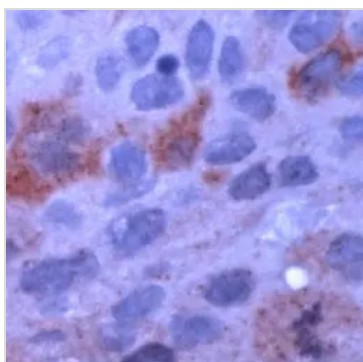
Purchasers shall not, and agree not to enable third parties to, analyze, copy, reverse engineer or otherwise attempt to determine the structure or sequence of the product.



For full product information, images and publications, please visit our [website](#).

**DATA IMAGES**

**GTx73034 IHC-P Image**

Formalin fixed paraffin embedded human breast carcinoma stained with Cyclin B1 antibody (cat. # GTx73034).


**GTx73034 IHC-P Image**

Human Breast Carcinoma stained with anti-Cyclin B1 antibody (GTx73034)



For full product information, images and publications, please visit our [website](#).