

# Caspase 3 antibody

**Cat. No. GTX73090**

|                     |                           |
|---------------------|---------------------------|
| <b>Host</b>         | Rabbit                    |
| <b>Clonality</b>    | Polyclonal                |
| <b>Isotype</b>      | IgG                       |
| <b>Applications</b> | WB, IHC-P, IP, IHC        |
| <b>Reactivity</b>   | Human, Mouse, Rat, Rabbit |

**References** ( 6 )

**Package**

500 µl

## Applications

### Application Note

For IHC-P: Use at a dilution of 1:1,000. For IP: Use at a dilution of 1:2,000. For WB: Use at a dilution of 1:500. Optimal dilutions/concentrations should be determined by the researcher.

**Calculated MW** 32 kDa. ( [Note](#) )

## Properties

|                      |  |
|----------------------|--|
| <b>Form</b>          | Liquid   |
| <b>Buffer</b>        | PBS, 0.2% BSA  |
| <b>Preservative</b>  | 0.1% Sodium azide  |
| <b>Storage</b>       | Store as concentrated solution. Centrifuge briefly prior to opening vial. Store at 4°C. DO NOT FREEZE. |
| <b>Concentration</b> | 1 mg/ml (Please refer to the vial label for the specific concentration.)                               |
| <b>Immunogen</b>     | Recombinant full length human caspase 3 protein.   |
| <b>Purification</b>  | Protein A affinity purified  |
| <b>Conjugation</b>   | Unconjugated   |

### Note

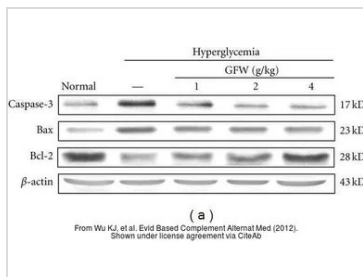
For laboratory research use only. Not for any clinical, therapeutic, or diagnostic use in humans or animals. Not for animal or human consumption.

Purchasers shall not, and agree not to enable third parties to, analyze, copy, reverse engineer or otherwise attempt to determine the structure or sequence of the product.



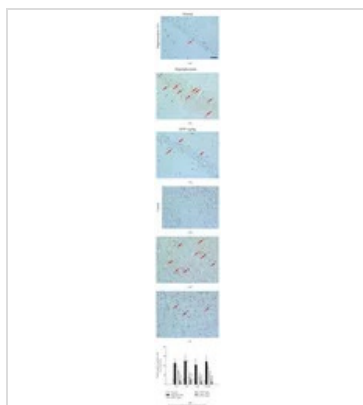
For full product information, images and publications, please visit our [website](#).

DATA IMAGES



GTx73090 WB Image

The data was published in the journal Evid Based Complement Alternat Med in 2012. [PMID: 23304209](https://pubmed.ncbi.nlm.nih.gov/23304209/)



GTx73090 IHC-P Image

The data was published in the journal Evid Based Complement Alternat Med in 2012. [PMID: 23304209](https://pubmed.ncbi.nlm.nih.gov/23304209/)



For full product information, images and publications, please visit our [website](https://www.genetex.com).