

## Rabbit Anti-Human lambda light chain antibody

Cat. No. GTX73365

Host	Rabbit
Clonality	Polyclonal
Isotype	IgG
Applications	IHC-P
Reactivity	Human

**Package**  
1 ml

## Applications

## Application Note

\*Optimal dilutions/concentrations should be determined by the researcher.

Suggested dilution	Recommended dilution
IHC-P	1:250-1:1000

**Note : Recommendations for antigen retrieval : Citrate Buffer pH 6.0**

Not tested in other applications.

## Product Note

This antibody reacts with free as well as bound lambda light chains. Contaminating antibodies have been removed by solid phase adsorption.

## Properties

Form	Liquid
Buffer	PBS
Preservative	0.09% Sodium azide
Storage	Store as concentrated solution. Centrifuge briefly prior to opening vial. Store at 4°C.
Concentration	Batch dependent (Please refer to the vial label for the specific concentration.)
Immunogen	Lambda light chains isolated from pooled urine of patients with Bence Jones proteinuria.
Purification	Purified IgG
Conjugation	Unconjugated

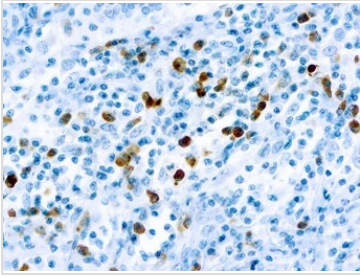
## Note

For laboratory research use only. Not for any clinical, therapeutic, or diagnostic use in humans or animals. Not for animal or human consumption.

Purchasers shall not, and agree not to enable third parties to, analyze, copy, reverse engineer or otherwise attempt to determine the structure or sequence of the product.



For full product information, images and publications, please visit our [website](#).

**DATA IMAGES**

**GTX73365 IHC-P Image**

IHC-P analysis of human tonsil tissue using GTX73365 Human lambda Light chain antibody.



For full product information, images and publications, please visit our [website](https://www.genetex.com).