

HSV1 antibody (ready-to-use)

Cat. No. GTX73373

Host	Rabbit
Clonality	Polyclonal
Isotype	IgG
Applications	IHC-P
Reactivity	Herpes simplex virus

Package
6 ml

Applications

Application Note

*Optimal dilutions/concentrations should be determined by the researcher.

Suggested dilution	Recommended dilution
IHC-P	Assay dependent

Note : Recommendations for antigen retrieval : Citrate Buffer pH 6.0

Not tested in other applications.

Product Note

This antibody reacts with HSV type I specific antigens and with antigens common to HSV type I and II virus. It reacts with all the major glycoproteins present in the viral envelope as well as with at least one core protein.

Properties

Form	Liquid
Buffer	PBS
Preservative	0.09% Sodium azide
Storage	Store as concentrated solution. Centrifuge briefly prior to opening vial. Store at 4°C.
Concentration	Batch dependent (Please refer to the vial label for the specific concentration.)
Immunogen	Whole rabbit corneal cells, infected with herpes simplex virus type I (strain Mac Intyre), were solubilized with detergent.
Purification	Purified IgG
Conjugation	Unconjugated

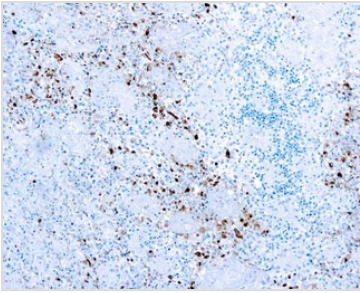
Note

For laboratory research use only. Not for any clinical, therapeutic, or diagnostic use in humans or animals. Not for animal or human consumption.

Purchasers shall not, and agree not to enable third parties to, analyze, copy, reverse engineer or otherwise attempt to determine the structure or sequence of the product.



For full product information, images and publications, please visit our [website](#).

DATA IMAGES

GTX73373 IHC-P Image

IHC-P analysis of human infected tissue tissue using GTX73373 HSV1 antibody (ready-to-use).



For full product information, images and publications, please visit our [website](#).