

pan Cytokeratin antibody (ready-to-use)

Cat. No. GTX73375

Host	Rabbit
Clonality	Polyclonal
Isotype	IgG
Applications	IHC-P
Reactivity	Human

Package
6 ml

Applications

Application Note

*Optimal dilutions/concentrations should be determined by the researcher.

Suggested dilution	Recommended dilution
IHC-P	Assay dependent

Not tested in other applications.

Product Note

This antibody reacts with cytokeratins of 58, 56, 52, 60, 51, 48 and 68 kDa MW. This antibody is well suited for the staining of a broad spectrum of human keratins.

Properties

Form	Liquid
Buffer	PBS
Preservative	0.09% Sodium azide
Storage	Store as concentrated solution. Centrifuge briefly prior to opening vial. Store at 4°C.
Concentration	Batch dependent (Please refer to the vial label for the specific concentration.)
Immunogen	Cytokeratin isolated from bovine muzzle epidermis.
Purification	Purified IgG
Conjugation	Unconjugated

Note

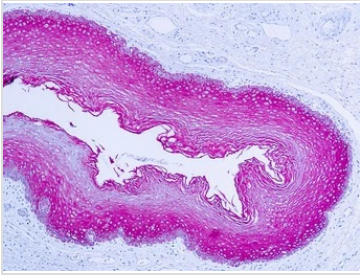
For laboratory research use only. Not for any clinical, therapeutic, or diagnostic use in humans or animals. Not for animal or human consumption.

Purchasers shall not, and agree not to enable third parties to, analyze, copy, reverse engineer or otherwise attempt to determine the structure or sequence of the product.



For full product information, images and publications, please visit our [website](#).

DATA IMAGES



GTX73375 IHC-P Image

IHC-P analysis of human skin tissue using GTX73375 pan Cytokeratin antibody (ready-to-use).



For full product information, images and publications, please visit our [website](#).