

## Myosin skeletal fast antibody [MY32] (ready-to-use)

**Cat. No. GTX73432**

<b>Host</b>	Mouse
<b>Clonality</b>	Monoclonal
<b>Isotype</b>	IgG1
<b>Applications</b>	WB, ICC/IF, IHC-P
<b>Reactivity</b>	Human, Rat

References ( 2 )

Package

6 ml

## Applications

**Application Note**

\*Optimal dilutions/concentrations should be determined by the researcher.

Suggested dilution	Recommended dilution
WB	Assay dependent
ICC/IF	Assay dependent
IHC-P	Assay dependent

**Note : Recommendations for antigen retrieval : Citrate Buffer pH 6.0**

Not tested in other applications.

**Product Note**

This antibody recognizes heavy chain of human skeletal myosin. It does not stain cardiac or smooth muscle myosin. This antibody stains the fast twitch (type II) isomyosin molecule.

## Properties

<b>Form</b>	Liquid
<b>Buffer</b>	Ascites
<b>Preservative</b>	0.09% Sodium azide
<b>Storage</b>	Store as concentrated solution. Centrifuge briefly prior to opening vial. Store at 4°C.
<b>Immunogen</b>	Rabbit muscle myosin.
<b>Purification</b>	Unpurified
<b>Conjugation</b>	Unconjugated

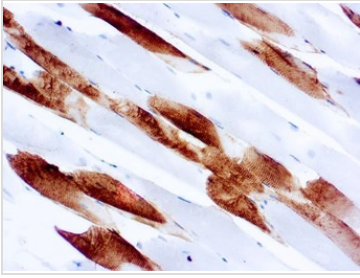
**Note**

For laboratory research use only. Not for any clinical, therapeutic, or diagnostic use in humans or animals. Not for animal or human consumption.

Purchasers shall not, and agree not to enable third parties to, analyze, copy, reverse engineer or otherwise attempt to determine the structure or sequence of the product.

For full product information, images and publications, please visit our [website](#).

## DATA IMAGES

**GTX73432 IHC-P Image**

IHC-P analysis of human skeletal muscle tissue using GTX73432 Myosin skeletal fast antibody [MY32] (ready-to-use).



For full product information, images and publications, please visit our [website](#).