

## EBV antibody [CS1, CS2, CS3, CS4] (ready-to-use)

**Cat. No. GTX73439**

<b>Host</b>	Mouse
<b>Clonality</b>	Monoclonal
<b>Isotype</b>	IgG1
<b>Applications</b>	IHC-P
<b>Reactivity</b>	Epstein-Barr virus

References ( 1 )

Package

6 ml

## Applications

**Application Note**

\*Optimal dilutions/concentrations should be determined by the researcher.

Suggested dilution	Recommended dilution
IHC-P	Assay dependent

**Note : Recommendations for antigen retrieval : Citrate Buffer pH 6.0**

Not tested in other applications.

## Properties

<b>Form</b>	Liquid
<b>Buffer</b>	Tissue culture supernatant
<b>Preservative</b>	0.09% Sodium azide
<b>Storage</b>	Store as concentrated solution. Centrifuge briefly prior to opening vial. Store at 4°C.
<b>Immunogen</b>	Recombinant fusion protein containing sequences of bacterial $\beta$ -galactosidase and EBV encoded latent membrane protein.
<b>Purification</b>	Unpurified
<b>Conjugation</b>	Unconjugated

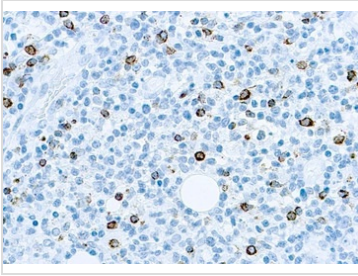
**Note**

For laboratory research use only. Not for any clinical, therapeutic, or diagnostic use in humans or animals. Not for animal or human consumption.

Purchasers shall not, and agree not to enable third parties to, analyze, copy, reverse engineer or otherwise attempt to determine the structure or sequence of the product.

For full product information, images and publications, please visit our [website](#).

## DATA IMAGES

**GTX73439 IHC-P Image**

IHC-P analysis of human infected lymphoblastoma tissue using GTX73439 EBV antibody [CS1, CS2, CS3, CS4] (ready-to-use).



For full product information, images and publications, please visit our [website](#).