

# Cytokeratin 20 antibody [KS 20.8] (ready-to-use)

**Cat. No. GTX73572**

<b>Host</b>	Mouse
<b>Clonality</b>	Monoclonal
<b>Isotype</b>	IgG2a
<b>Applications</b>	IHC-P
<b>Reactivity</b>	Human

**Package**  
6 ml

## Applications

### Application Note

\*Optimal dilutions/concentrations should be determined by the researcher.

Suggested dilution	Recommended dilution
IHC-P	Assay dependent

Not tested in other applications.

## Properties

<b>Form</b>	Liquid
<b>Buffer</b>	PBS
<b>Preservative</b>	0.09% Sodium azide
<b>Storage</b>	Store as concentrated solution. Centrifuge briefly prior to opening vial. Store at 4°C.
<b>Concentration</b>	Batch dependent (Please refer to the vial label for the specific concentration.)
<b>Immunogen</b>	Cytokeratins isolated from human micro-dissected villi of human duodenal mucosa.
<b>Purification</b>	Purified IgG
<b>Conjugation</b>	Unconjugated

### Note

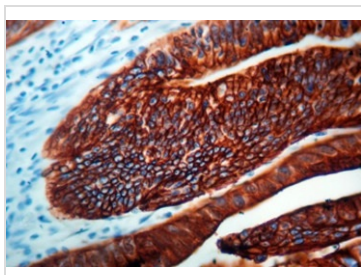
For laboratory research use only. Not for any clinical, therapeutic, or diagnostic use in humans or animals. Not for animal or human consumption.

Purchasers shall not, and agree not to enable third parties to, analyze, copy, reverse engineer or otherwise attempt to determine the structure or sequence of the product.



For full product information, images and publications, please visit our [website](#).

## DATA IMAGES



### GTX73572 IHC-P Image

IHC-P analysis of human colon carcinoma tissue using GTX73572 Cytokeratin 20 antibody [KS 20.8] (ready-to-use).



For full product information, images and publications, please visit our [website](#).