

## S100 antibody [SH-B1] (ready-to-use)

Cat. No. GTX73589

Host	Mouse
Clonality	Monoclonal
Isotype	IgG1
Applications	IHC-P
Reactivity	Human

Package  
6 ml

## Applications

## Application Note

\*Optimal dilutions/concentrations should be determined by the researcher.

Suggested dilution	Recommended dilution
IHC-P	Assay dependent

Not tested in other applications.

## Product Note

This antibody is specific against an epitope located on the  $\beta$  chain (i.e. in S-100a and S-100b) but not on the  $\alpha$  chain of S-100 (i.e. in S-100a and S-100ao). This antibody can be used to localize S-100a and S-100b in various tissue sections.

## Properties

Form	Liquid
Buffer	Ascites
Preservative	0.09% Sodium azide
Storage	Store as concentrated solution. Centrifuge briefly prior to opening vial. Store at 4°C.
Immunogen	Purified bovine brain S-100 $\beta$ preparation.
Purification	Unpurified
Conjugation	Unconjugated

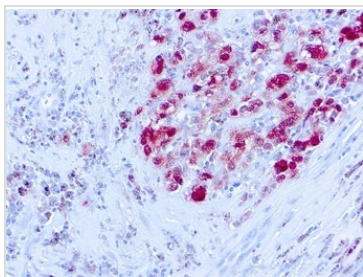
## Note

For laboratory research use only. Not for any clinical, therapeutic, or diagnostic use in humans or animals. Not for animal or human consumption.

Purchasers shall not, and agree not to enable third parties to, analyze, copy, reverse engineer or otherwise attempt to determine the structure or sequence of the product.



For full product information, images and publications, please visit our [website](#).

**DATA IMAGES**

**GTX73589 IHC-P Image**

IHC-P analysis of human melanoma tissue using GTX73589 S100 antibody [SH-B1] (ready-to-use).



For full product information, images and publications, please visit our [website](#).