

Chromogranin A antibody [LK2H10] (ready-to-use)

Cat. No. GTX73638

Host	Mouse
Clonality	Monoclonal
Isotype	IgG1
Applications	WB, IHC-P, IHC-Fr
Reactivity	Human

References (2)
 Package
 6 ml

Applications

Application Note

*Optimal dilutions/concentrations should be determined by the researcher.

Suggested dilution	Recommended dilution
WB	Assay dependent
IHC-P	Assay dependent
IHC-Fr	Assay dependent

Note : Recommendations for antigen retrieval : Citrate Buffer pH 6.0

Not tested in other applications.

Calculated MW 51 kDa. ([Note](#))

Properties

Form	Liquid
Buffer	PBS
Preservative	0.09% Sodium azide
Storage	Store as concentrated solution. Centrifuge briefly prior to opening vial. Store at 4°C.
Concentration	Batch dependent (Please refer to the vial label for the specific concentration.)
Immunogen	BALB/C mice were immunized with human pheochromocytoma.
Purification	Purified IgG
Conjugation	Unconjugated

Note

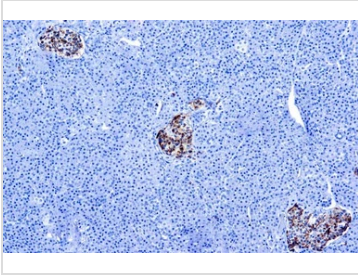
For laboratory research use only. Not for any clinical, therapeutic, or diagnostic use in humans or animals. Not for animal or human consumption.

Purchasers shall not, and agree not to enable third parties to, analyze, copy, reverse engineer or otherwise attempt to determine the structure or sequence of the product.



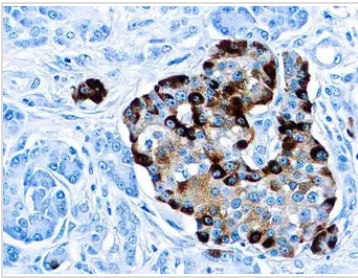
For full product information, images and publications, please visit our [website](#).

DATA IMAGES



GTx73638 IHC-P Image

IHC-P analysis of human pancreas tissue using GTx73638 Chromogranin A antibody [LK2H10] (ready-to-use).



GTx73638 IHC-P Image

IHC-P analysis of human normal pancreas tissue using GTx73638 Chromogranin A antibody [LK2H10] (ready-to-use) with GTx03611 DP3 reagent, One-Step Deparaffinization.



For full product information, images and publications, please visit our [website](#).