

CD68 antibody [PG-M1]

Cat. No. GTX73723

Host	Mouse
Clonality	Monoclonal
Isotype	IgG3
Applications	ICC/IF, IHC-P, IHC
Reactivity	Human, Mouse

References (5)

Package

500 µl

Applications

Application Note

*Optimal dilutions/concentrations should be determined by the researcher.

Suggested dilution	Recommended dilution
ICC/IF	Assay dependent
IHC-P	1:10-1:40
IHC	Assay dependent

Not tested in other applications.

Properties

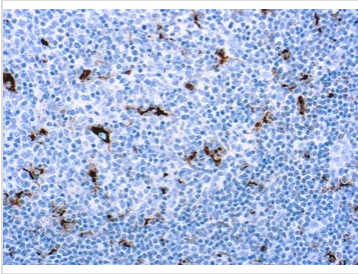
Form	Liquid
Buffer	Tissue culture supernatant
Preservative	0.09% Sodium azide
Storage	Store as concentrated solution. Centrifuge briefly prior to opening vial. Store at 4°C.
Immunogen	BALB/C mice were immunized with Gaucher's cells.
Purification	Unpurified
Conjugation	Unconjugated

Note

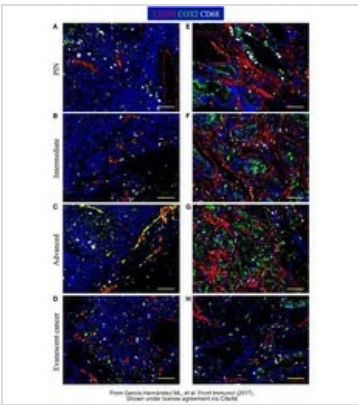
For laboratory research use only. Not for any clinical, therapeutic, or diagnostic use in humans or animals. Not for animal or human consumption.

Purchasers shall not, and agree not to enable third parties to, analyze, copy, reverse engineer or otherwise attempt to determine the structure or sequence of the product.

For full product information, images and publications, please visit our [website](#).

DATA IMAGES

GTX73723 IHC-P Image

IHC-P analysis of human tonsil tissue using GTX73723 CD68 antibody [PG-M1].


GTX73723 IHC Image

The data was published in the journal Front Immunol in 2017. [PMID: 28567040](https://pubmed.ncbi.nlm.nih.gov/28567040/)



For full product information, images and publications, please visit our [website](#).