

Estrogen Receptor alpha antibody [6F11] (ready-to-use)

Cat. No. GTX73808

Host	Mouse
Clonality	Monoclonal
Isotype	IgG1
Application	IHC-P
Reactivity	Human

Reference (2)
Package
5 ml

APPLICATION

Application Note

*Optimal dilutions/concentrations should be determined by the researcher.

Suggested dilution	Recommended dilution
IHC-P	Assay dependent

Note : Recommendations for antigen retrieval : EDTA buffer pH 8.0 at room temperature for 30 mins.

Not tested in other applications.

Calculated MW 66 kDa. ([Note](#))

PROPERTIES

Form	Liquid
Buffer	Tissue culture supernatant
Preservative	0.09% Sodium azide
Storage	Store as concentrated solution. Centrifuge briefly prior to opening vial. Store at 4°C.
Immunogen	Prokaryotic recombinant protein corresponding to the full-length estrogen receptor molecule.
Purification	Unpurified
Conjugation	Unconjugated

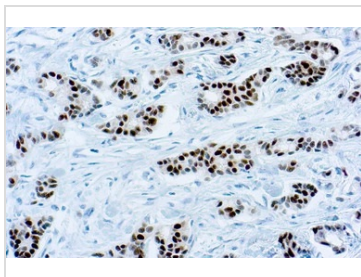
Note

For laboratory research use only. Not for any clinical, therapeutic, or diagnostic use in humans or animals. Not for animal or human consumption.

Purchasers shall not, and agree not to enable third parties to, analyze, copy, reverse engineer or otherwise attempt to determine the structure or sequence of the product.



For full product information, images and publications, please visit our [website](#).

DATA IMAGES

GTX73808 IHC-P Image

IHC-P analysis of human breast carcinoma tissue using GTX73808 Estrogen Receptor alpha antibody [6F11] (ready-to-use).



For full product information, images and publications, please visit our [website](#).