

CD34 antibody [QBEND/10]

Cat. No. GTX73823

Host	Mouse
Clonality	Monoclonal
Isotype	IgG1
Applications	IHC-P, IHC
Reactivity	Human

References (1)
Package
1 ml

Applications

Application Note

*Optimal dilutions/concentrations should be determined by the researcher.

Suggested dilution	Recommended dilution
IHC-P	1:50-1:100
IHC	Assay dependent

Note : Recommendations for antigen retrieval : Citrate Buffer pH 6.0

Not tested in other applications.

Properties

Form	Liquid
Buffer	PBS
Preservative	0.09% Sodium azide
Storage	Store as concentrated solution. Centrifuge briefly prior to opening vial. Store at 4°C.
Concentration	Batch dependent (Please refer to the vial label for the specific concentration.)
Immunogen	Endothelial cells (HUVE).
Purification	Purified IgG
Conjugation	Unconjugated

Note

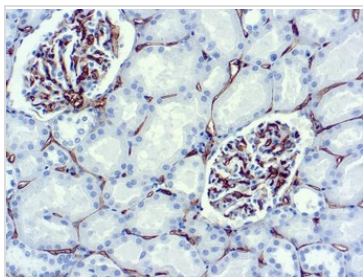
For laboratory research use only. Not for any clinical, therapeutic, or diagnostic use in humans or animals. Not for animal or human consumption.

Purchasers shall not, and agree not to enable third parties to, analyze, copy, reverse engineer or otherwise attempt to determine the structure or sequence of the product.



For full product information, images and publications, please visit our [website](#).

DATA IMAGES



GTX73823 IHC-P Image

IHC-P analysis of human kidney tissue using GTX73823 CD34 antibody [QBEND-10].



For full product information, images and publications, please visit our [website](#).