

Cytokeratin 20 antibody [KS 20.8]

Cat. No. GTX73825

Host	Mouse
Clonality	Monoclonal
Isotype	IgG2a
Application	IHC-P
Reactivity	Human

Package
1 ml

APPLICATION

Application Note

*Optimal dilutions/concentrations should be determined by the researcher.

Suggested dilution	Recommended dilution
IHC-P	1:25-1:50
Not tested in other applications.	

Calculated MW 48 kDa. ([Note](#))

PROPERTIES

Form	Liquid
Buffer	PBS
Preservative	0.09% Sodium azide
Storage	Store as concentrated solution. Centrifuge briefly prior to opening vial. Store at 4°C.
Concentration	Batch dependent (Please refer to the vial label for the specific concentration.)
Immunogen	Cytokeratins isolated from human micro-dissected villi of human duodenal mucosa.
Purification	Purified IgG
Conjugation	Unconjugated

Note

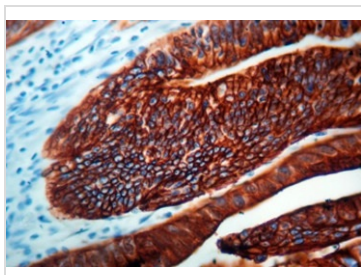
For laboratory research use only. Not for any clinical, therapeutic, or diagnostic use in humans or animals. Not for animal or human consumption.

Purchasers shall not, and agree not to enable third parties to, analyze, copy, reverse engineer or otherwise attempt to determine the structure or sequence of the product.



For full product information, images and publications, please visit our [website](#).

DATA IMAGES



GTX73825 IHC-P Image

IHC-P analysis of human colon carcinoma tissue using GTX73825 Cytokeratin 20 antibody [KS 20.8].



For full product information, images and publications, please visit our [website](#).