

## EGFR antibody [111.6]

Cat. No. GTX73849

Host	Mouse
Clonality	Monoclonal
Isotype	IgG1
Application	IHC-P
Reactivity	Human

Reference ( 1 )

Package

1 ml

## APPLICATION

## Application Note

\*Optimal dilutions/concentrations should be determined by the researcher.

Suggested dilution	Recommended dilution
IHC-P	1:25-1:50

Not tested in other applications.

Calculated MW	134 kDa. ( <a href="#">Note</a> )
---------------	-----------------------------------

Product Note	The antibody recognizes an epitope mapping in the extracellular domain of EGFR.
--------------	---

## PROPERTIES

Form	Liquid
Buffer	PBS with <0.1% sodium azide
Storage	Store as concentrated solution. Centrifuge briefly prior to opening vial. Store at 4°C.
Concentration	Batch dependent (Please refer to the vial label for the specific concentration.)
Immunogen	BALB/C mice were injected with extracellular domain of human recombinant EGFR protein.
Purification	Purified IgG
Conjugation	Unconjugated

## Note

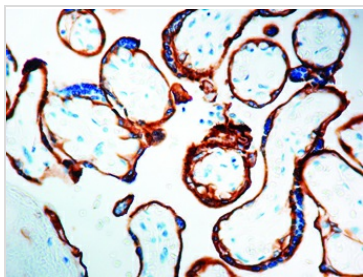
For laboratory research use only. Not for any clinical, therapeutic, or diagnostic use in humans or animals. Not for animal or human consumption.

Purchasers shall not, and agree not to enable third parties to, analyze, copy, reverse engineer or otherwise attempt to determine the structure or sequence of the product.



For full product information, images and publications, please visit our [website](#).

## DATA IMAGES



### GTX73849 IHC-P Image

IHC-P analysis of human placenta tissue using GTX73849 EGFR antibody [111.6].



For full product information, images and publications, please visit our [website](#).