

# IL1 beta antibody

**Cat. No. GTX74034**

<b>Host</b>	Rabbit
<b>Clonality</b>	Polyclonal
<b>Isotype</b>	IgG
<b>Applications</b>	WB, ICC/IF, IHC-P, IHC-Fr, ELISA
<b>Reactivity</b>	Human, Mouse, Rat

References ( 114 )

★★★★★ Review ( 1 )

Package

100 µl

## PRODUCT

### Summary

Interleukin-1 beta (IL-1 beta) antibody detects IL-1 beta protein, which is a proinflammatory cytokine produced by active macrophages. In recent reports, IL-1 beta activation via caspase-1 can be induced by infectious pathogens in a process known as "pyroptosis", a form of programmed cell death that initiates an inflammatory antimicrobial response. IL-1 beta is also a key factor in cytokine storms associated with both infectious and non-infectious diseases.

### Applications

### Application Note

\*Optimal dilutions/concentrations should be determined by the researcher.

Suggested dilution	Recommended dilution
WB	1:500-1:3000
ICC/IF	1:100-1:1000
IHC-P	1:100-1:1000
IHC-Fr	1:100-1:1000
ELISA	0.5-2µg/ml

Not tested in other applications.

**Calculated MW** 31 kDa. ( [Note](#) )

## Properties

<b>Form</b>	Liquid
<b>Buffer</b>	PBS
<b>Preservative</b>	No preservatives
<b>Storage</b>	Store as concentrated solution. Centrifuge briefly prior to opening vial. For short-term storage (1-2 weeks), store at 4°C. For long-term storage, aliquot and store at -20°C or below. Avoid multiple freeze-thaw cycles.
<b>Concentration</b>	1 mg/ml (Please refer to the vial label for the specific concentration.)
<b>Immunogen</b>	Recombinant murine IL1 beta
<b>Purification</b>	Purified by antigen-affinity chromatography.



For full product information, images and publications, please visit our [website](#).

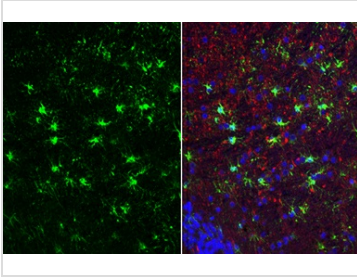
**Conjugation**

Unconjugated

**Note**

For laboratory research use only. Not for any clinical, therapeutic, or diagnostic use in humans or animals. Not for animal or human consumption.

Purchasers shall not, and agree not to enable third parties to, analyze, copy, reverse engineer or otherwise attempt to determine the structure or sequence of the product.

**DATA IMAGES**

**GTX74034 IHC-P Image**

IL1 beta antibody detects IL1 beta protein at microglia by immunohistochemical analysis.

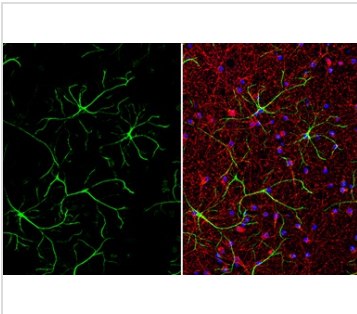
Sample: Paraffin-embedded rat cerebellum.

Green: IL1 beta stained by IL1 beta antibody (GTX74034) diluted at 1:250.

Red: NF-H, a neuron marker, stained by NF-H antibody [GT114] (GTX634289) diluted at 1:500.

Blue: Fluoroshield with DAPI (GTX30920).

Antigen Retrieval: Citrate buffer, pH 6.0, 15 min


**GTX74034 ICC/IF Image**

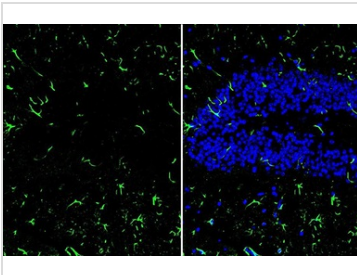
IL1 beta antibody detects IL1 beta protein by immunofluorescent analysis.

Sample: DIV9 rat E18 primary cortical neuron and glia cells were fixed in 4% paraformaldehyde at RT for 15 min.

Green: IL1 beta stained by IL1 beta antibody (GTX74034) diluted at 1:500.

Red: beta Tubulin 3/ Tuj1, stained by beta Tubulin 3/ Tuj1 antibody [GT11710] (GTX631836) diluted at 1:500.

Blue: Fluoroshield with DAPI (GTX30920).

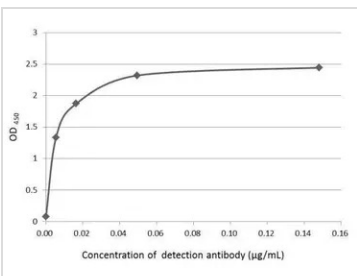

**GTX74034 IHC-Fr Image**

IL1 beta antibody detects IL1 beta protein at microglia by immunohistochemical analysis.

Sample: Frozen-sectioned mouse hippocampus.

Green: IL1 beta stained by IL1 beta antibody (GTX74034) diluted at 1:250.

Blue: Fluoroshield with DAPI (GTX30920).


**GTX74034 ELISA Image**

An ELISA plate is coated with 50 µL of IL1 beta recombinant protein at concentration of 5 µg/mL. The coated protein is detected with anti-IL1 beta antibody (GTX74034) at concentration ranged from 0.01 to 0.15 µg/mL.



For full product information, images and publications, please visit our [website](https://www.genetex.com).