

IL1 alpha antibody

Cat. No. GTX74157

Host	Rabbit
Clonality	Polyclonal
Isotype	IgG
Applications	WB, IHC-P, ELISA, Functional Assay
Reactivity	Human

References (1)

Package

50 µg

Applications

Application Note

*Optimal dilutions/concentrations should be determined by the researcher.

Suggested dilution	Recommended dilution
WB	0.1-0.2µg/ml
IHC-P	Assay dependent
ELISA	0.5µg/ml
Functional Assay	Assay dependent

Not tested in other applications.

Calculated MW 31 kDa. ([Note](#))

Properties

Form	Liquid
Buffer	PBS
Preservative	No preservatives
Storage	Store as concentrated solution. Centrifuge briefly prior to opening vial. For short-term storage (1-2 weeks), store at 4°C. For long-term storage, aliquot and store at -20°C or below. Avoid multiple freeze-thaw cycles.
Concentration	1.0 mg/ml (Please refer to the vial label for the specific concentration.)
Immunogen	Recombinant human IL-1alpha
Purification	Purified by affinity chromatography
Conjugation	Unconjugated

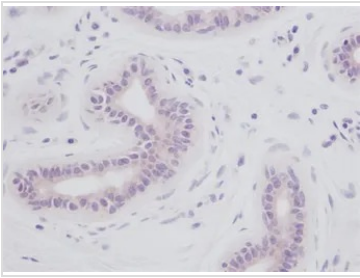
Note

For laboratory research use only. Not for any clinical, therapeutic, or diagnostic use in humans or animals. Not for animal or human consumption.

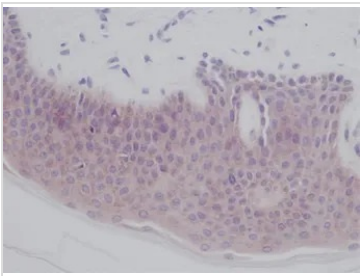
Purchasers shall not, and agree not to enable third parties to, analyze, copy, reverse engineer or otherwise attempt to determine the structure or sequence of the product.



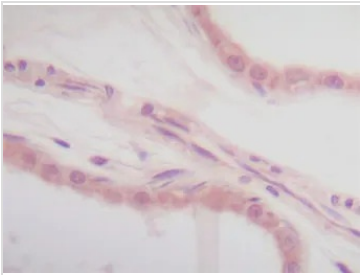
For full product information, images and publications, please visit our [website](#).

DATA IMAGES

GTX74157 IHC-P Image

IHC-P analysis of normal human skin tissue using GTX74157 IL1 alpha antibody.


GTX74157 IHC-P Image

IHC-P analysis of human skin tissue using GTX74157 IL1 alpha antibody.


GTX74157 IHC-P Image

IHC-P analysis of normal human skin tissue using GTX74157 IL1 alpha antibody.



For full product information, images and publications, please visit our [website](#).