

IL15 antibody

Cat. No. GTX74169

Host	Rabbit
Clonality	Polyclonal
Isotype	IgG
Applications	WB, IHC-P, IP, ELISA, Neutralizing/Inhibition
Reactivity	Human

Package

50 µg

Applications

Application Note

*Optimal dilutions/concentrations should be determined by the researcher.

Suggested dilution	Recommended dilution
WB	0.1-0.2µg/ml
IHC-P	Assay dependent
IP	Assay dependent
ELISA	0.5µg/ml
Neutralizing/Inhibition	Assay dependent

Note : Rabbit anti Human Interleukin-15 antibody will neutralise IL-15 activity in bioassay systems.

Not tested in other applications.

Calculated MW	18 kDa. (Note)
Product Note	This antibody will neutralise IL-15 activity in bioassay systems.

Properties

Form	Liquid
Buffer	PBS
Preservative	No preservatives
Storage	Store as concentrated solution. Centrifuge briefly prior to opening vial. For short-term storage (1-2 weeks), store at 4°C. For long-term storage, aliquot and store at -20°C or below. Avoid multiple freeze-thaw cycles.
Concentration	1.0 mg/ml (Please refer to the vial label for the specific concentration.)
Immunogen	Recombinant human IL-15
Purification	Purified by antigen-affinity chromatography
Conjugation	Unconjugated

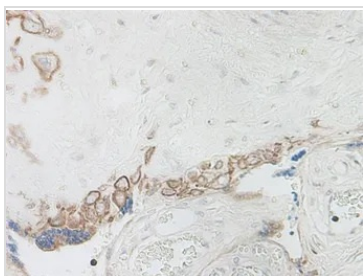


For full product information, images and publications, please visit our [website](#).

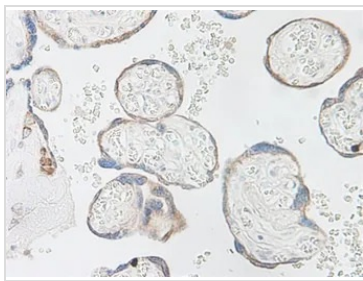
For laboratory research use only. Not for any clinical, therapeutic, or diagnostic use in humans or animals. Not for animal or human consumption.

Note

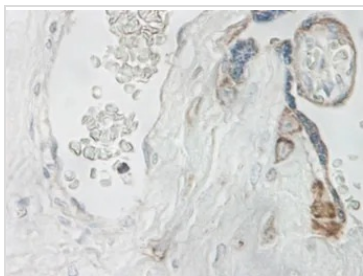
Purchasers shall not, and agree not to enable third parties to, analyze, copy, reverse engineer or otherwise attempt to determine the structure or sequence of the product.

DATA IMAGES

GTX74169 IHC-P Image

IHC-P analysis of normal human placenta tissue using GTX74169 IL15 antibody.


GTX74169 IHC-P Image

IHC-P analysis of normal human placenta tissue using GTX74169 IL15 antibody.


GTX74169 IHC-P Image

IHC-P analysis of normal human placenta tissue using GTX74169 IL15 antibody.



For full product information, images and publications, please visit our [website](#).