

iNOS antibody

Cat. No. GTX74171

Host	Rabbit
Clonality	Polyclonal
Isotype	IgG
Applications	WB, ICC/IF, IHC-P, IHC-Fr
Reactivity	Mouse, Rat

References (4)

Package

50 µl

Applications

Application Note

For IHC-Fr: Use at a dilution of 1:500. For WB: Use at a dilution of 1:2,000. Optimal dilutions/concentrations should be determined by the researcher.

Calculated MW	131 kDa. (Note)
Product Note	Recognizes inducible nitric oxide synthase (iNOS), and does not cross react with endothelial nitric oxide synthase (eNOS) or brain nitric oxide synthase (bNOS).

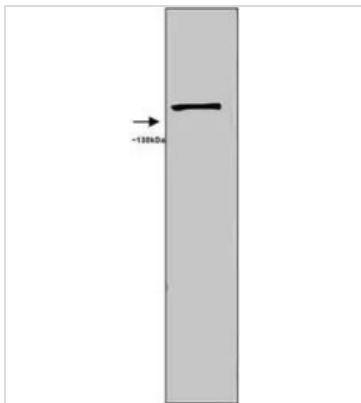
Properties

Form	Liquid
Buffer	PBS
Preservative	0.09% Sodium azide
Storage	Store as concentrated solution. Centrifuge briefly prior to opening vial. For short-term storage (1-2 weeks), store at 4°C. For long-term storage, aliquot and store at -20°C or below. Avoid multiple freeze-thaw cycles.
Immunogen	Mouse macrophage NOS C-terminal peptide (1131-1144) + additional N-terminal Cys conjugated to KLH (CKKGSALKEPKATRL).
Purification	Unpurified From polyclonal serum.
Conjugation	Unconjugated
Note	<p>For laboratory research use only. Not for any clinical, therapeutic, or diagnostic use in humans or animals. Not for animal or human consumption.</p> <p>Purchasers shall not, and agree not to enable third parties to, analyze, copy, reverse engineer or otherwise attempt to determine the structure or sequence of the product.</p>



For full product information, images and publications, please visit our [website](#).

DATA IMAGES



GTX74171 WB Image

Detection of mouse inducible nitric oxide synthase by immunoblotting. Sample: Mouse macrophage RAW 264.7 cell line induced with IFN γ and LPS. Primary antibody: Anti-Nitric Oxide Synthase (GTX74171)



For full product information, images and publications, please visit our [website](#).