

TRAIL antibody

Cat. No. GTX74230

Host	Rabbit
Clonality	Polyclonal
Isotype	IgG
Applications	WB, IHC-P
Reactivity	Human

Package
100 µg

Applications

Application Note

*Optimal dilutions/concentrations should be determined by the researcher.

Suggested dilution	Recommended dilution
WB	1-5 µg/mL
IHC-P	20µg/mL

Not tested in other applications.

Calculated MW 33 kDa. ([Note](#))

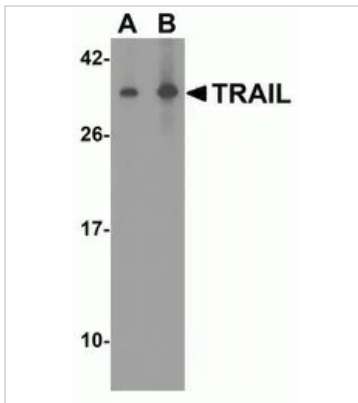
Properties

Form	Liquid
Buffer	PBS
Preservative	0.02% Sodium azide
Storage	Store as concentrated solution. Centrifuge briefly prior to opening vial. For short-term storage (1-2 weeks), store at 4°C. For long-term storage, aliquot and store at -20°C or below. Avoid multiple freeze-thaw cycles.
Concentration	0.5 mg/ml (Please refer to the vial label for the specific concentration.)
Immunogen	TRAIL antibody was raised against a peptide corresponding to 17 amino acids near the carboxy terminus of human TRAIL. The immunogen is located within the last 50 amino acids of Trail.
Purification	Purified by antigen-affinity chromatography
Conjugation	Unconjugated
Note	For laboratory research use only. Not for any clinical, therapeutic, or diagnostic use in humans or animals. Not for animal or human consumption. Purchasers shall not, and agree not to enable third parties to, analyze, copy, reverse engineer or otherwise attempt to determine the structure or sequence of the product.



For full product information, images and publications, please visit our [website](#).

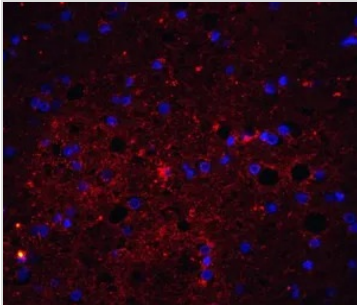
DATA IMAGES

**GTX74230 WB Image**

WB analysis of human brain tissue lysate using GTX74230 TRAIL antibody.

Lane A : 2.5µg/ml

Lane B : 5µg/ml

**GTX74230 IHC-P Image**

IHC-P analysis of human brain tissue using GTX74230 TRAIL antibody.

Dilution : 20µg/ml



For full product information, images and publications, please visit our [website](#).