

## FLIP antibody

Cat. No. GTX74270

Host	Rabbit
Clonality	Polyclonal
Isotype	IgG
Application	WB, ICC/IF
Reactivity	Mouse

Package  
100 µg

## APPLICATION

## Application Note

\*Optimal dilutions/concentrations should be determined by the researcher.

Suggested dilution	Recommended dilution
WB	1/500-1/1,000
ICC/IF	5 µg/ml

Not tested in other applications.

**Calculated MW** 55 kDa. ( [Note](#) )

**Product Note** FLIP exists in 2 forms, FLIPs (short) and FLIPL (long). This antibody recognises only FLIPL

## PROPERTIES

Form	Liquid
Buffer	PBS
Preservative	0.02% Sodium azide
Storage	Store as concentrated solution. Centrifuge briefly prior to opening vial. For short-term storage (1-2 weeks), store at 4°C. For long-term storage, aliquot and store at -20°C or below. Avoid multiple freeze-thaw cycles.
Concentration	0.5 mg/ml (Please refer to the vial label for the specific concentration.)
Immunogen	Synthetic peptide from C-terminus of murine FLIPL
Purification	Purified by ion exchange chromatography
Conjugation	Unconjugated

## Note

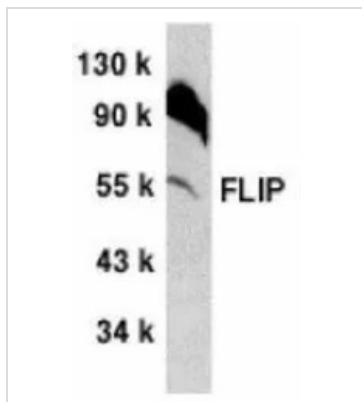
For laboratory research use only. Not for any clinical, therapeutic, or diagnostic use in humans or animals. Not for animal or human consumption.

Purchasers shall not, and agree not to enable third parties to, analyze, copy, reverse engineer or otherwise attempt to determine the structure or sequence of the product.



For full product information, images and publications, please visit our [website](#).

## DATA IMAGES



### GTX74270 WB Image

WB analysis of NIH3T3 cell lysate using GTX74270 FLIP antibody.



### GTX74270 ICC/IF Image

ICC/IF analysis of NIH3T3 cells using GTX74270 FLIP antibody.



For full product information, images and publications, please visit our [website](#).